

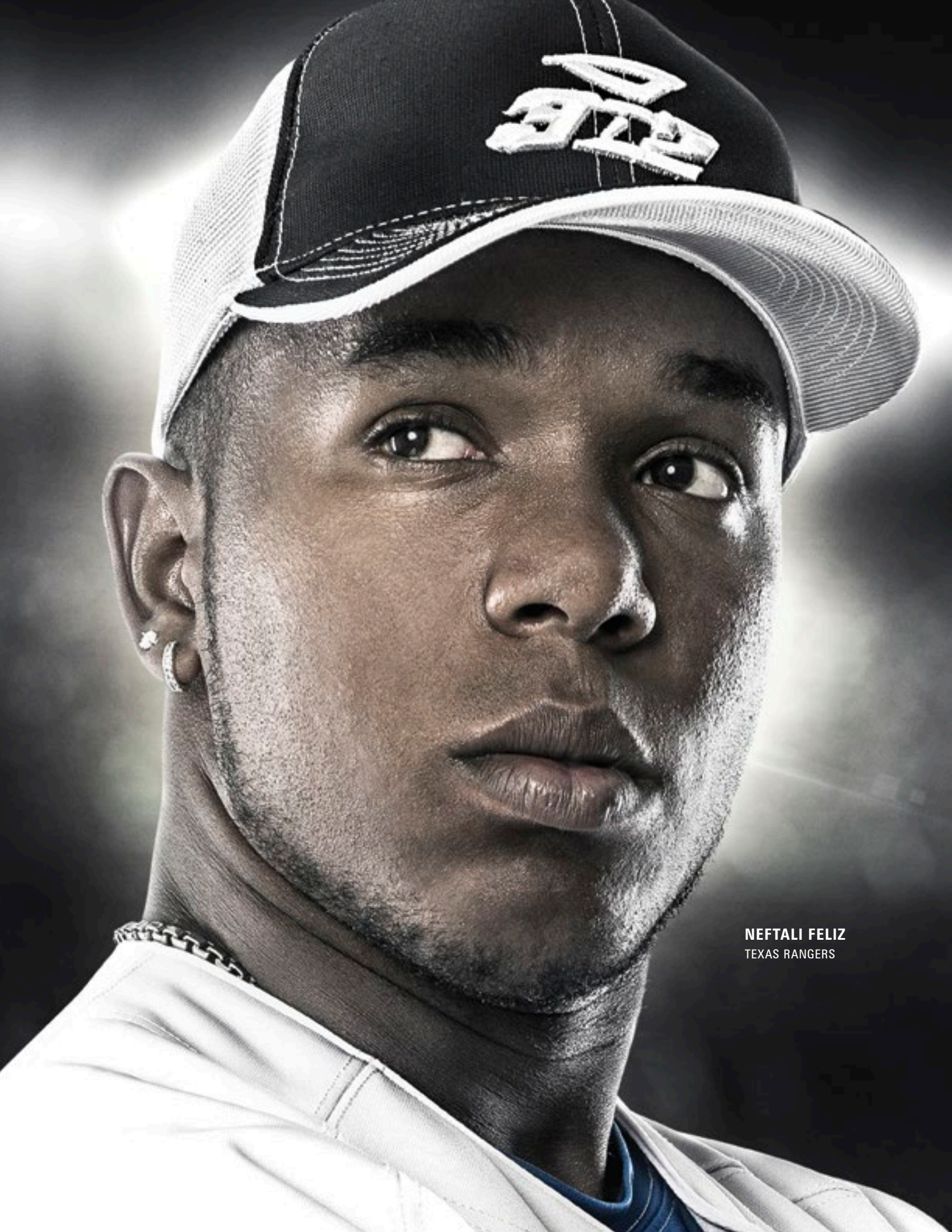
312

CLUTCH PERFORMANCE



2014
PRODUCT
CATALOG





NEFTALI FELIZ
TEXAS RANGERS

SHUT THEM DOWN

FOOTWEAR

<u>BASEBALL</u>	<u>9</u>
<u>FASTPITCH</u>	<u>13</u>
<u>TURFS + TRAINERS</u>	<u>17</u>

APPAREL

<u>UNISEX</u>	<u>23</u>
<u>MEN'S</u>	<u>27</u>
<u>WOMEN'S</u>	<u>31</u>

STOCK UNIFORMS

<u>MEN'S</u>	<u>34</u>
<u>WOMEN'S</u>	<u>40</u>

ACCESSORIES

<u>SOCKS + SANDALS</u>	<u>45</u>
<u>HATS + VISORS</u>	<u>46</u>
<u>GLOVES</u>	<u>48</u>
<u>BAGS</u>	<u>49</u>

OFFICIATING

<u>FOOTWEAR</u>	<u>53</u>
<u>APPAREL</u>	<u>55</u>

MY3N2.COM

<u>CUSTOM FOOTWEAR</u>	<u>59</u>
<u>CUSTOM APPAREL</u>	<u>62</u>
<u>CUSTOM UNIFORMS</u>	<u>65</u>
<u>SUBLIMATED UNIFORMS</u>	<u>75</u>
<u>CUSTOM GLOVES</u>	<u>88</u>

**KZONE COOL – Keeps You Cool**

KZONE rapid evaporation technology employs 100% Polyzone™ microfiber construction to keep athletes cool, dry and comfortable when the heat is on. KZONE performance wear and accessories are soft, lightweight and incredibly durable.

**ROTOGRIP – Proprietary Outsole**

3N2's ROTOGRIP outsole is created from a revolutionary dual-injection process, employing a rugged compound to protect cleat tips from premature wear, and a more supple base material for maximum flex and support. Its 12-cleat configuration features a rotary heel for sure footing on any surface, quick cutting and instant acceleration. Added durability comes courtesy of a subtly raised TPU toe bumper.

**FUEGO-8 – Proprietary Outsole**

FUEGO-8 is our premiere-pro, 8-spike cleat configuration custom designed from next-gen materials to meet the unique performance demands of professional athletes. Features a flame-patterned, dual-color TPU outsole.

**KZONE WARM – Keeps You Warm**

KZONE technology fine-tunes muscle temperature while enabling rapid evaporation of skin moisture, keeping you dry and warm when temperatures drop. KZONE performance wear features an exterior poly microfiber shell and thin, lightweight interior poly fleece.

**PROPIVOT – Cleat Configuration**

Developed in conjunction with 3N2 athletes, the proprietary PROPIVOT cleat configuration features a center-flex tread pattern specifically designed to maximize speed, traction and batting power.

**FLEXCORE – Insole Technology**

The FLEXCORE form-fitting insole achieves a snug, ergonomic fit through its unique spiral, flex-groove design. A foam core provides optimum shock absorption, while an integrated forefoot flex-plate provides maximum impact resistance against cleat pressure. Lined with O-ZONE antimicrobial shield.

**O-ZONE – Antimicrobial Shield**

O-ZONE is powered by patented Agion® technology and defends against insole odor. Unlike other antimicrobials, Agion® is natural and non-toxic, employing silver ions to attack and inhibit the growth of odor causing microbes.

**METAMESH – Mesh Technology**

METAMESH is an advanced synthetic mesh that maintains the lightweight flexibility and breathability of conventional mesh while providing unprecedented abrasion-resistance and durability ratings that are off the charts.

**JACKRABBIT – Proprietary Midsole**

The JACKRABBIT EVA heel spring system provides cushioned comfort and rapid response performance to power athletes through even the toughest training regimen.

3N2 TECHNOLOGY

**BOUNCEBACK – Midsole Technology**

The advanced design of the sleek BOUNCEBACK midsole system utilizes an integrated air-bubble to provide unbelievably responsive cushioning, spring and impact absorption. The bubble is suspended midheel to best counter and soften downward force.

**LEVIT 8 – Proprietary Midsole**

The lighter-than-air, injection-molded LEVIT 8 is one of the lightest midsoles 3N2 has ever produced. Although more expensive than traditional EVA, injection molding results in a higher-quality, lighter and more durable midsole with less environmental waste.

**REVV – Proprietary Outsole**

Bust out of the batters box in the REVV, our advanced grip, speed-enhancing outsole with a dual-form tread pattern for easy pivoting and powering around the bases. Its 3N2 custom-designed TPU shank provides arch support and flexibility.

**FLASHPOINT – Flame-Laminated Construction**

A revolutionary process that eliminates the need for toxic glues in footwear manufacturing. Using FLASHPOINT, 3N2 shoe components are affixed to one another through flame lamination, resulting in a lighter, more durable shoe that is also environmentally and worker friendly.

**ELEV8 – Proprietary Midsole**

The feather-light ELEV8 is a 3N2 classic — the compression-molded, pro-caliber midsole featured on the entire line of 3N2 professional spikes. Heralded for its durability, cushion and spring, the ELEV8 is a true performance booster.

**NITRO-9 – Proprietary Outsole**

The NITRO-9 molded outsole features an aggressive, TPU nine-cleat configuration inset into a highly flexible, wave-patterned plate. Enables explosive starts, dead stops and breakneck base running.

**SOFTSHIELD – Proprietary Apparel**

SoftShield is an outer protective apparel covering made from a proprietary material blend that is both extremely water resistant, supple and soft to the touch. Currently featured in 3N2's line of RBI Fleece apparel.

**PT – Pitching Toe**

Protect your cleats from premature wear with the insanely tough PT PITCHING TOE. The PT is designed and engineered for highly fluid toe drag and is made from a revolutionary rubber compound that is lighter and more durable than traditional pitching toes.

**POGO – Proprietary Midsole**

The 3N2 POGO is an advanced, injection-molded Phylon midsole designed to minimize both underfoot cleat pressure and athlete response time. The injection process makes POGO one of the lightest weight midsoles on the market with one of the longest lasting cushions. Injection molding is also environmentally friendly, greatly reducing the amount of waste associated with conventional molding.

**IGNITE – Proprietary Outsole**

Light up the diamond with IGNITE - our classic, rugged turf outsole boasting a single-form tread pattern that provides the uniform support and rotational traction needed to confidently power around bases.

**GLIDE – Proprietary Midsole**

Keep a spring in your step game-after-game with the GLIDE - our lightweight, compression-molded EVA midsole specifically designed to relieve pressure on the knees and back, providing unparalleled comfort and performance.

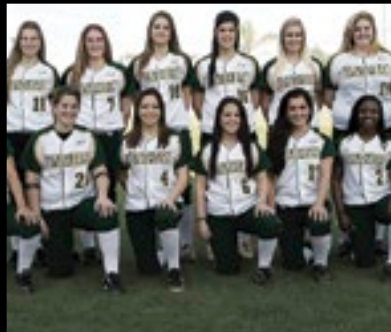


3N2 WAS BORN ON THE BALLFIELD – the product of both experience and opportunity: The collective experience we share as die-hard softball and baseball players and the opportunity to fill a need. That need? Footwear designed by players, for players. Footwear that addresses the dynamic relationship between comfort and performance.

OWN THE MOMENT

The Go-To Guy. Big Hitter. The Ace. Game Changer. However you phrase it, the player is the same. It's the rare talent that has what it takes to pull out a clutch performance – and whether you're a pro, a rising star or a weekend warrior, you know that top-level performance and ill-fitting footwear are not a winning combination.

SERIOUS ATHLETES CHOOSE 3N2.



THE ATHLETE COUNCIL

We partner closely with some of the game's top players to design and test our products.

*This commitment to research and development keeps 3N2 at the forefront of innovation
and the preferred choice of serious Softball and Baseball Athletes. Our mission is simple:*

***GIVE PLAYERS THE EDGE THEY NEED TO ACHIEVE
THE HIGHEST LEVELS OF PERFORMANCE POSSIBLE.***



NEFTALI FELIZ
TEXAS RANGERS

GREG ZAYAS
4 THE FALLEN

MICHELE SMITH
TWO-TIME OLYMPIC
GOLD MEDALIST

LAUREN LAPPIN
USSSA PRIDE
OLYMPIC SILVER MEDALIST

SCOTT COUSINS
LOS ANGELES ANGELS

BASEBALL FOOTWEAR

AJ BURNETT
PITTSBURGH PIRATES



NEFTALI FELIZ
TEXAS RANGERS

RALLY PM

BLACK 6438-01



TECHNOLOGY FEATURED:



MSRP: \$84.99

MEN'S SIZING: 6-12.5

Half Sizes, 13, 14, 15

(Women order 1.5 size down)

WEIGHT: 12.0 ounces

Ready to rock right out of the box. The **RALLY PM** baseball cleat is a lightweight performer featuring a pro-grade suede, patent leather and tightly woven Nylon mesh upper. A rugged toe bumper provides enhanced durability and a cushioned collar provides maximum comfort and support. Ankle strapping and a removable tongue flap add versatility and security, while an O-ZONE sockliner and insole provides odor and fungal protection. Rides on an ELEV8 feather-light EVA midsole and a FUEGO-8 metal 8-spike configuration.



NAVY 6438-03



RED 6438-35



WHITE 6438-06

RALLY PM TPU

NAVY 6448-03



TECHNOLOGY FEATURED:



MSRP: \$79.99

MEN'S SIZING: 5-12.5

Half Sizes, 13

(Women order 1.5 size down)

WEIGHT: 12.6 ounces

Ready to rock right out of the box. The **RALLY PM TPU** baseball cleat is a lightweight performer featuring a pro-grade suede, patent leather and tightly woven Nylon mesh upper. A rugged toe bumper provides enhanced durability and a cushioned collar provides maximum comfort and support. Ankle strapping and a removable tongue flap add versatility and security, while an O-ZONE sockliner and insole provides odor and fungal protection. Rides on a dual-injection POGO midsole and our cutting-edge ROTOGrip TPU outsole 12-cleat configuration.



BLACK 6448-01



WHITE 6448-06



RED 6448-35

PULSE+ METAL

BLACK/WHITE 6638-0106



TECHNOLOGY FEATURED:



MSRP: \$94.99

MEN'S SIZING: 6-12.5

Half Sizes, 13, 14, 15

(Women order 1.5 size down)

WEIGHT: 12.4 ounces

Strap into premium, pro-level performance with the **3N2 PULSE+ METAL** baseball cleats. The heart of PULSE+ performance is 3N2's most advanced outsole to date. It's a proprietary nine-spoke configuration with optimized cleat placement and variable cleat lengths that enhance lateral quickness and enable explosive acceleration. Despite their outer toughness, these cleats remain comfortable thanks to a full-length EVA midsole that supports and cushions the forefoot, minimizing cleat pressure points. The upper is high-grade patent leather and lightweight suede. The toe is shielded against wear with a rugged TPU bumper. Exo TPU heel counter and internal fit straps provide support to the ankle and a consistent fit.



ROYAL/WHITE 6638-0206



RED/WHITE 6638-3506

ROOKIE YOUTH

BLACK 8825-0104



TECHNOLOGY FEATURED:



Legendary 3N2 performance in a versatile starter cleat. The **ROOKIE YOUTH** features a synthetic leather and mesh upper for flexibility and breathability, a lightweight midsole and a proprietary, molded outsole configuration to boost speed and improve traction.

MSRP: \$39.99

YOUTH SIZING: 1-6 Half Sizes

WEIGHT: 7.2 ounces



PINK 8825-1004



NAVY 8825-0304



RED 8825-3504



FASTPITCH FOOTWEAR

NATASHA WATLEY
USSSA PRIDE
OLYMPIC GOLD MEDALIST
OLYMPIC SILVER MEDALIST

Photo by Dina Kvit - Courtesy of National Pro Fastpitch



VICKY GALINDO
CHICAGO BANDITS
OLYMPIC SILVER MEDALIST

LAUREN LAPPIN
USSSA PRIDE
OLYMPIC SILVER MEDALIST

RALLY TPU

NAVY/WHITE 5835-0306



TECHNOLOGY FEATURED:



The **RALLY TPU** is the ultimate in durability and versatility — a go-anywhere, do-anything fastpitch performer that rides on a rugged ROTOGrip TPU outsole. The RALLY TPU features a pro-caliber ankle stabilization system with highly-cushioned ankle collar for maximum comfort, lightweight suede and patent leather construction and a rugged toe bumper. Also features O-ZONE, powered by patented Agion® technology, which defends against insole odor. Prototyped, tested and adored by professional fastpitch athletes.

MSRP: \$74.99

WOMEN'S SIZING: 5-12 Half Sizes

WEIGHT: 11.6 ounces



BLACK/WHITE 5835-0106



RED/WHITE 5835-3506



WHITE/BLACK 5835-0601

RALLY TPU PT

RED/WHITE 5845-3506



TECHNOLOGY FEATURED:



The **RALLY TPU PT** is the ultimate in durability and versatility — a go-anywhere, do-anything fastpitch performer that rides on a rugged ROTOGrip TPU outsole and features the insanely tough PT Pitching Toe. The PT Pitching Toe is designed and engineered for highly fluid toe drag and is made from a revolutionary rubber compound that is lighter and more durable than traditional pitching toes. The RALLY TPU PT features a pro-caliber ankle stabilization system with highly cushioned ankle collar for maximum comfort, lightweight suede and patent leather construction and a rugged toe bumper. Also features O-ZONE, powered by patented Agion® technology, which defends against insole odor. Prototyped, tested and adored by professional fastpitch athletes.

MSRP: \$84.99

WOMEN'S SIZING: 5-12 Half Sizes

WEIGHT: 13.6 ounces



BLACK/WHITE 5845-0106



NAVY/WHITE 5845-0306



WHITE/BLACK 5845-0601

RALLY METAL

BLACK/WHITE 5935-0106



TECHNOLOGY FEATURED:



The **RALLY METAL** is the latest in 3N2's line of dynamic, pro-performance fastpitch cleats. Features a revolutionized ankle stabilization system with highly cushioned ankle collar for maximum comfort, lightweight suede and patent leather construction, a rugged toe bumper and a removable tongue suitable for custom embroidery. Also features O-ZONE, powered by patented Agion® technology, which defends against insole odor. Prototyped, tested and adored by professional fastpitch athletes.

MSRP: \$79.99

WOMEN'S SIZING: 5-12 Half Sizes

WEIGHT: 11.0 ounces



RED/WHITE 5935-3506



WHITE/BLACK 5935-0601



NAVY/WHITE 5935-0306

RALLY METAL PT

WHITE/BLACK 5945-0601



TECHNOLOGY FEATURED:



Rough and ready. The **RALLY METAL PT** is a highly durable, pro-performance fastpitch cleat featuring our insanely tough PT Pitching Toe — designed and engineered for highly fluid toe drag and made from a revolutionary rubber compound that is lighter and more durable than traditional pitching toes. Features a pro-caliber ankle stabilization system with highly cushioned ankle collar for maximum comfort, lightweight suede and patent leather construction, a rugged toe bumper and a removable tongue suitable for custom embroidery. Also features O-ZONE, powered by patented Agion® technology, which defends against insole odor. Prototyped, tested and adored by professional fastpitch athletes.

MSRP: \$89.99

WOMEN'S SIZING: 5-12 Half Sizes

WEIGHT: 13.0 ounces



RED/WHITE 5945-3506



BLACK/WHITE 5945-0106



NAVY/WHITE 5945-0306

DEXTER AVERY
4 THE FALLEN





JEFF McGAVIN
COMBAT

GREG ZAYAS
4 THE FALLEN



TURFS & TRAINERS

MOMENTUM TRAINER LO

PATENT LEATHER BLACK/WHITE

7835P-0106



TECHNOLOGY FEATURED:



The high-performance evolution of the legendary 3N2 Pro Turf Trainer. The feather-light **MOMENTUM TRAINER LO** features a custom designed, injection-molded LEVIT8 midsole and genuine leather upper reinforced with CORDURA® — “The Tough Stuff” — a revolutionary material that is 3X more durable than polyester, 2X more durable than Nylon, and as breathable as conventional mesh. Fitted with a removable leather tongue flap, 3N2 Speed Lacing System and molded heel counter to ensure superior fit and stability. NOTE: Black/White features Black Patent Leather.

MSRP: \$64.99

MEN'S SIZING: 6-12.5

Half Sizes, 13, 14, 15

(Women order 1.5 size down)

WEIGHT: 12.4 ounces



BLACK 7835-0101



ROYAL 7835-0206



RED 7835-3535



NAVY 7835-0202

MOMENTUM TRAINER MID

ROYAL 7735-0206



TECHNOLOGY FEATURED:



The high-performance evolution of the legendary 3N2 Pro Turf Trainer. The feather-light **MOMENTUM TRAINER MID** features a custom designed, injection-molded LEVIT8 midsole and genuine leather upper reinforced with CORDURA® — “The Tough Stuff” — a revolutionary material that is 3X more durable than polyester, 2X more durable than Nylon, and as breathable as conventional mesh. Fitted with a removable leather tongue flap, 3N2 Speed Lacing System and molded heel counter to ensure superior fit and stability. NOTE: Black/White features Black Patent Leather.

MSRP: \$69.99

MEN'S SIZING: 6-12.5

Half Sizes, 13, 14, 15

(Women order 1.5 size down)

WEIGHT: 12.8 ounces



BLACK 7735-0101



PATENT LEATHER B/W
7735P-0106



RED 7735-3535



NAVY 7735-0202

MOFO TRAINER

RED 7845-35



TECHNOLOGY FEATURED:



MSRP: \$64.99

MEN'S SIZING: 3.5-12.5

Half Sizes, 13, 14, 15

(Women order 1.5 size down)

WEIGHT: 12.0 ounces

If you are looking for lightweight softball turfs that are big on comfort and performance, move forward with **MOFO TRAINER**. Featuring a genuine leather and METAMESH upper with double-stitched reinforcement in high-wear areas, and our feather-light GLIDE midsole designed specifically for relieving knee and back pressure, the MOFO is perfect for everything from light training to grueling, weekend back-to-backs. A TPU shank in the arch and molded heel counter work to ensure superior fit and stability, while its IGNITE outsole - boasting a classic, single-form tread pattern - provides uniform support and rotational traction for confidently powering around bases.



BLACK 7845-01



WHITE 7845-06



NAVY 7845-03



ROYAL 7845-02

RALLY TRAINER PT

BLACK 5955-01



TECHNOLOGY FEATURED:



MSRP: \$79.99

WOMEN'S SIZING: 5-12 Half Sizes

WEIGHT: 11.0 ounces

The performance-driven **RALLY TRAINER PT** adds style and comfort for softball pitchers in training and practice sessions. 3N2's insanely light-yet-rugged PT Pitching Toe fronts the Rally Trainer PT's advanced upper, made of lightweight suede, patent leather, and breathable METAMESH. Flame-laminated construction eliminates the use of toxic glues, so it's both eco-friendly and resilient. A TPU shank in the arch, molded heel counter, and highly cushioned collar ensure superior fit and stability, while its IGNITE outsole—boasting a classic, single-form tread pattern—provides uniform support and rotational traction for confidently powering off the mound. Agion® technology powers an O-ZONE anti-microbial shield, and K-Zone sock liner, defending against odor.



WHITE 5955-06



**MAXIMUM
VELOCITY**

VELO RUNNER

BLACK/VOLT YELLOW 7920-0171



TECHNOLOGY FEATURED:



MSRP: \$69.99

MEN'S SIZING: 6-12.5

Half Sizes, 13

(Women order 1.5 size down)

WEIGHT: 7.0 ounces

Mind-blowing. Door-busting. Revolutionary. The **VELO RUNNER** is a running shoe for pace setters—not pace keepers. Lighter than its competitors, it barely moves the needle at only 7.0 ounces — heavyweight presence in a featherweight frame. Floating on cloud-like cushioning, innovative midsole technology gives the Velo incredible flexibility, as well as providing rapid responsiveness to your foot's slightest movements, essential qualities for both sprint and distance running. A durable woven mesh upper affords superior breathability without sacrificing support and stability. Featuring a supple outsole, optimally grooved for unmarred traction, the Velo allows for fluid range of motion throughout each stride.



GRAPHITE/PYRO ORANGE
7920-7372



BLACK/GRAPHITE
7920-0173



OPTIC BLUE/GRAPHITE
7920-7073



GRAPHITE/RED
7920-7335

ZING TRAINER

BLACK 7270-0101



TECHNOLOGY FEATURED:



MSRP: \$64.99

MEN'S SIZING: 5-12.5

Half Sizes, 13, 14, 15

(Women order 1.5 size down)

WEIGHT: 11.0 ounces

Dig it out in the sleek, aggressive **3N2 ZING TRAINER**. The ZING rides on a proprietary **BOUNCEBACK** midsole, which provides unprecedented flexibility and rapid-response performance. Its upper features a loose-weave mesh for maximum breathability, textured leather and high-frequency TPU strapping for sure-fit support.



NAVY/WHITE 7270-0306



RED/WHITE 7270-3506



ROYAL/WHITE 7270-0206



WHITE/BLACK 7270-0601

NEFTALI FELIZ
TEXAS RANGERS





UNISEX APPAREL

VICKY GALINDO
CHICAGO BANDITS
OLYMPIC SILVER MEDALIST

KZONE COOL SHORT SLEEVE LOOSE

NAVY
3200-03

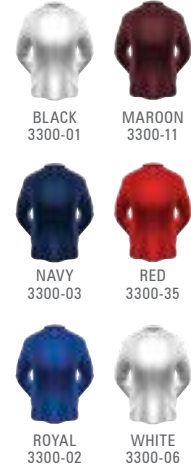


KZONE™ Keeps You Cool. Loose-fitting, short sleeve KZONE™ performance wear quickly wicks moisture away from your skin, keeping you dry and comfortable during workouts. Features 100% Polyzone™ microfiber construction.

MSRP: \$24.99 | **UNISEX SIZING:** YS, YM, YL, XS, S, M, L, XL, XXL, XXXL
COLORS: Navy, Black, Forest Green, Maroon, Red, Royal, White

KZONE COOL LONG SLEEVE LOOSE

FOREST GREEN
3300-15



KZONE™ Keeps You Cool. Loose-fitting, long sleeve KZONE™ performance wear quickly wicks moisture away from your skin, keeping you dry and comfortable during workouts. Features 100% Polyzone™ microfiber construction.

MSRP: \$29.99 | **UNISEX SIZING:** YS, YM, YL, XS, S, M, L, XL, XXL, XXXL
COLORS: Forest Green, Black, Maroon, Navy, Red, Royal, White

KZONE COOL SHORT SLEEVE TIGHT

WHITE
3210-06

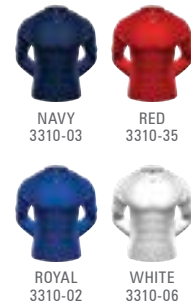


KZONE™ Keeps You Cool. Form-fitting, short sleeve KZONE™ performance wear is ideal for warm weather and high pressure situations, ensuring rapid evaporation of skin moisture, keeping you dry, comfortable and on top of your game. Features 100% Polyzone™ microfiber construction and can be comfortably worn under game uniforms.

MSRP: \$29.99 | **UNISEX SIZING:** XS, S, M, L, XL, XXL, XXXL
COLORS: White, Black, Navy, Red, Royal

KZONE COOL LONG SLEEVE TIGHT

BLACK
3310-01



KZONE™ Keeps You Cool. Form-fitting, long sleeve KZONE™ performance wear will keep you cool in the clutch, quickly wicking moisture away from your skin to keep you dry and comfortable during workouts. Features 100% Polyzone™ microfiber construction and can be comfortably worn under game uniforms.

MSRP: \$34.99 | **UNISEX SIZING:** XS, S, M, L, XL, XXL, XXXL
COLORS: Black, Navy, Red, Royal, White

KZONE WARM LONG SLEEVE TIGHT

ROYAL
3350-02



BLACK
3350-01

FOREST GREEN
3350-15



WHITE
3350-06

NAVY
3350-03

KZONE™ Keeps You Warm. You'll never freeze up in form-fitting KZONE™ performance wear. KZONE™ regulates muscle temperature while enabling rapid evaporation of skin moisture, keeping you dry and warm when temperatures drop. Features an exterior poly microfiber shell and thin, lightweight interior poly fleece.

MSRP: \$39.99 | **UNISEX SIZING:** XS, S, M, L, XL, XXL, XXXL
COLORS: Royal, Black, Forest Green, White, Navy

TEC TRAINING SHIRT

BLACK
3010-01



GREY
3010-05

WHITE
3010-06



ROYAL
3010-02

RED
3010-35



NAVY
3010-03

The all-purpose **3N2 TEC TRAINING SHIRT** is the perfect choice for everyday training needs. Features Polyzone™ microfiber construction that feels like cotton, but has KZONE™ moisture management and O-ZONE antimicrobial protection for enhanced comfort and performance.

MSRP: \$24.99 | **UNISEX SIZING:** YS, YM, YL, XS, S, M, L, XL, XXL, XXXL
COLORS: Black, Grey, White, Royal, Red, Navy

PERFORMANCE POLO

BLACK 3100-01



WHITE
3100-06

A modern take on the enduring classic. Designed to perform, this loose fitting **PERFORMANCE POLO** is built from advanced synthetics that wick away moisture to keep you cool and dry. Unrivaled quality. Unrivaled comfort.

MSRP: \$39.99 | **UNISEX SIZING:** XS, S, M, L, XL, XXL, XXXL
COLORS: Black, White

TEC HOODIE

BLACK
3450-01



FOREST GREEN
3450-15

GREY
3450-05



MAROON
3450-11

NAVY
3450-03



ROYAL
3450-02

Style and performance. The wear-anywhere **3N2 TEC HOODIE** features a drawstring hood, fleece interior, and Polyzone™ microfiber construction for durability and lightweight performance.

MSRP: \$49.99 | **MEN'S SIZING:** XS, S, M, L, XL, XXL, XXXL
COLORS: Black, Forest Green, Grey, Maroon, Navy, Royal

RAIN PULLOVER

NAVY
3410-03



BLACK
3410-0106



RED
3410-35



ROYAL
3410-02

The versatile **3N2 RAIN PULLOVER** is perfect for powering through cooler temperatures or inclement weather. Features a quarter zip front, side zipper and embroidered 3N2 logo. Nylon outer shell with breathable Polymesh liner with set-in front pockets.

MSRP: \$54.99 | **MEN'S SIZING:** YM, YL, XS, S, M, L, XL, XXL, XXXL
COLORS: Navy, Black, Red, Royal

TEC PANTS

BLACK
4110-01



FOREST GREEN
4110-15



GREY
4110-05



MAROON
4110-11



NAVY
4110-03



ROYAL
4110-02

Style and performance. The wear-anywhere **3N2 TEC PANTS** feature front pockets, fleece interior, drawstring and thick Polyzone™ microfiber construction for durability and lightweight performance.

MSRP: \$49.99 | **MEN'S SIZING:** XS, S, M, L, XL, XXL, XXXL
COLORS: Black, Forest Green, Grey, Maroon, Navy, Royal

BULLPEN PULLOVER SHORT SLEEVE

BLACK
3405-01



RED
3405-35



NAVY
3405-03



ROYAL
3405-02

Whether you're warming up, cooling down, taking practice swings or fielding grounders, the lightweight, versatile **3N2 BULLPEN PULLOVER** has you covered. Features 100% Microfiber Polyester shell with two button collar and Poly Mesh liner for maximum flexibility.

MSRP: \$44.99 | **MEN'S SIZING:** YM, YL, XS, S, M, L, XL, XXL, XXXL
COLORS: Black, Red, Navy, Royal

80/20 HOODIE

GREY
3455-05



BLACK
3455-01

Style and performance. The wear-anywhere **80/20 HOODIE** features a drawstring hood and 80% cotton/20% polyester construction for maximum durability and lightweight comfort.

MSRP: \$29.99 | **MEN'S SIZING:** YS, YM, YL, XS, S, M, L, XL, XXL, XXXL
COLORS: Grey, Black

CLUTCH TRAINING JACKET

ROYAL
3490-02



BLACK
3490-01

NAVY
3490-03

GREY
3490-05

The **CLUTCH TRAINING JACKET** is a structured-cut, lightweight training jacket designed from a specialized fabric blend, providing quick-dry ventilation and an incredibly soft hand feel. Front warmer pockets and a thin micro-fiber interior lining provide additional comfort, while an MP3 player and cord holder add essential functionality. Zip front.

MSRP: \$54.99 | **MEN'S SIZING:** XS, S, M, L, XL, XXL, XXXL
COLORS: Royal, Black, Navy, Grey

3N2 T-SHIRT

BLACK/SILVER
3000-0114



BLACK/ORANGE
3000-0109

WHITE/BLACK
3000-0601

Rugged, lightweight and breathable, the 100% cotton **3N2 T-SHIRT** lets people know you're a clutch performer. Features a seamless collar, double-needle stitched bottom and sleeve hem.

MSRP: \$17.99 | **MEN'S SIZING:** S, M, L, XL, XXL, XXXL
COLORS: Black/Silver, Black/Orange, White/Black

CLUTCH TRAINING PANTS

ROYAL 3495-02



NAVY
3495-03

BLACK
3495-01

GREY
3495-05

Lightweight **CLUTCH TRAINING PANTS** feature a structured fit, two front pockets and a drawstring elastic waistband. Designed from a specialized fabric blend that provides quick-dry ventilation and an incredible soft hand feel. A back zip pocket and ankle zip vents provide added functionality.

MSRP: \$54.99 | **MEN'S SIZING:** XS, S, M, L, XL, XXL, XXXL
COLORS: Royal, Navy, Black, Grey

SLIDER SHORTS

WHITE
4010-06



BLACK
4010-01

3N2 SLIDER SHORTS are a performance essential. Made of a lightweight micro-fiber poly blend, they reduce friction, increase protection and rapidly evaporate moisture from the skin. 11" inseam.

MSRP: \$24.99 | **MEN'S SIZING:** XS, S, M, L, XL, XXL, XXXL
COLORS: White, Black

KZONE RBI PRO FLEECE ZIP PULLOVER

BLACK
3070-01



RED
3070-35



NAVY
3070-03



ROYAL
3070-02

Perfect for when the diamond heats up and the weather cools down. The **KZONE™ RBI PRO FLEECE ZIP PULLOVER** features a SOFTSHIELD water-resistant, microfiber outer shell with a quarter zip and a plush interior fleece lining. Breathability zones in the shoulder and arm vents enable rapid evaporation of skin moisture.

MSRP: \$64.99 | **MEN'S SIZING:** XS, S, M, L, XL, XXL, XXXL
COLORS: Black, Red, Navy, Royal

MICRO MESH SHORTS

GREY
4001-05



BLACK
4001-01

WHITE
4001-06



NAVY
4001-03

RED
4001-35



ROYAL
4001-02

3N2 MICRO MESH SHORTS are the perfect fit for everyday training. Feature a light, breathable micro mesh weave to keep you cool and two front pockets to keep your stuff. Elastic waist with drawstring. 9" inseam.

MSRP: \$24.99 | **MEN'S SIZING:** YS, YM, YL, XS, S, M, L, XL, XXL, XXXL
COLORS: Grey, Black, White, Navy, Red, Royal

KZONE RBI PRO FLEECE PANTS

BLACK/WHITE
3060-0106



NAVY/WHITE
3060-0306



ROYAL/WHITE
3060-0206

Perfect for when the diamond heats up and the weather cools down. **KZONE™ RBI PRO FLEECE PANTS** feature a SOFTSHIELD water-resistant, microfiber outer shell with a plush interior fleece lining. Breathability zones in the thigh area enable rapid evaporation of skin moisture. A back zip pocket, two front pockets and ankle zip vents add essential functionality.

MSRP: \$54.99 | **MEN'S SIZING:** XS, S, M, L, XL, XXL, XXXL
COLORS: Black/White, Navy/White, Royal/White

KZONE RBI PRO FLEECE

ROYAL/RED
3050-0235



Stay on top of your game during warm-ups, in between at-bats or when the thermometer drops in the **3N2 KZONE™ RBI PRO FLEECE**. Features ribbed Polyzone™ microfiber construction with KZONE™ breathability zones in the shoulder and arm vents to enable rapid evaporation of skin moisture, keeping you dry and warm when the action heats up and the weather cools down.

MSRP: \$54.99 | **MEN'S SIZING:** YS, YM, YL, XS, S, M, L, XL, XXL, XXXL

COLORS: Black, Red, Forest Green, Maroon, Navy, Royal, Navy/White, Black/Red, Black/Athletic Gold, Black/Purple, Black/White, Royal/Red



BLACK
3050-01



RED
3050-35



FOREST GREEN
3050-15



MAROON
3050-11



NAVY
3050-03



ROYAL
3050-02



NAVY/WHITE
3050-0306



BLACK/RED
3050-0135



BLACK/ATHLETIC GOLD
3050-0107



BLACK/PURPLE
3050-0112



BLACK/WHITE
3050-0106

PRACTICE SHIRT

ROYAL
3005-02



BLACK
3005-01



NAVY
3005-03

The **3N2 PRACTICE SHIRT** was designed specifically to meet the unique fashion and function requirements of a female athlete. Mesh vents on the side panels, and 100% Polyzone fabric keep athletes dry, cool and comfortable. A flattering two-toned neck line and tailored slim fit accentuates the female form.

MSRP: \$29.99 | **WOMEN'S SIZING:** XS, S, M, L, XL
COLORS: Royal, Black, Navy

PERFORMANCE POLO

BLACK
3105-01



WHITE
3105-06

An enduring classic with a feminine twist. Designed to perform, this classic **PERFORMANCE POLO** features a slimming, fashion-fit and is built from advanced synthetics that wick away moisture to keep you cool and dry. Unrivaled quality. Unrivaled comfort.

MSRP: \$39.99 | **WOMEN'S SIZING:** XS, S, M, L, XL, XXL, XXXL
COLORS: Black, White

PRACTICE SHORTS

ROYAL
4005-02



BLACK
4005-01



NAVY
4005-03

The **3N2 PRACTICE SHORTS** were designed specifically with the unique performance demands of the female athlete in mind. Mesh venting on the side panels and 100% Polyzone™ fabric keep athletes dry, cool and comfortable.

MSRP: \$24.99 | **WOMEN'S SIZING:** XS, S, M, L, XL
COLORS: Royal, Black, Navy

SPORTS BRA

BLACK
3115-01



WHITE
3115-06



Comfort equals performance. The cushioned no-stretch strapping of the **3N2 SPORTS BRA** will trounce the bounce, while two-ply side strapping slays the sway. Molded concealer cups provide maximum support and prevent show-through, while moisture-wicking fabric keeps you dry, cool and comfortable. Additional comfort features include a mesh back and soft, elastic lower band. Nylon/spandex/polyester blend.

MSRP: \$29.99 | **WOMEN'S SIZING:** S, M, L, XL
COLORS: Black, White

CAP SLEEVE T-SHIRT

BLACK
3002-01



WHITE
3002-06

Slim-fit, lightweight and breathable, the 100% cotton **3N2 WOMEN'S CAP SLEEVE T-SHIRT** lets people know you're a clutch performer. Features a seamless collar, double-needle stitched bottom, and sleeve hem.

MSRP: \$19.99 | **WOMEN'S SIZING:** S, M, L, XL, XXL
COLORS: Black, White

3N2 KARMA WOMEN'S YOGA PANT

BLACK
1900-01



Comfortable. Flexible. Stylish. Everything you want in a pair of yoga pants, and then some. **3N2 KARMA WOMEN'S YOGA PANT** is a form fitting full-length pant with a fold-over waist and a slight flare below the knee. The pant features flat seams to avoid chafing in a moisture-wicking fabric that is breathable and soft to the touch. Comfortable enough for training. Stylish enough for every day wear.

MSRP: \$54.99 | **WOMEN'S SIZING:** XS, S, M, L, XL, XXL
COLORS: Black

SLIDER SHORTS

WHITE
4010W-06



BLACK
4010W-01

Whether worn under shorts or uniform pants, **3N2 SLIDER SHORTS** provide unparalleled comfort and protection. Feature an elastic waistband, front and back mesh panels and poly-spandex construction to quickly wick moisture from your skin. Machine washable. 6" inseam.

MSRP: \$24.99 | **WOMEN'S SIZING:** XS, S, M, L, XL
COLORS: White, Black

TRAINING JACKET

GREY
3475-05

Look good. Feel good. Perform great. The **3N2 TRAINING JACKET** features a form-friendly fit and is designed from a specialized fabric blend which provides quick-dry ventilation and an incredibly soft hand feel. Front warmer pockets and a thin micro-fiber interior lining provide additional comfort, while an MP3 player and cord holder add essential functionality. Zip front.

MSRP: \$54.99 | **WOMEN'S SIZING:** XS, S, M, L, XL, XXL

COLORS: Grey, Black, Royal, Navy



BLACK
3475-01



ROYAL
3475-02



NAVY
3475-03



TRAINING PANTS

GREY
4105-05

Style and performance combine in our lightweight **3N2 TRAINING PANTS**. Feature a form-friendly fit, front pockets, drawstring elastic waistband and are designed from a specialized fabric blend, which provides an incredibly soft hand feel.

MSRP: \$54.99 | **WOMEN'S SIZING:** XS, S, M, L, XL

COLORS: Grey, Black, Navy, Royal



BLACK
4105-01



NAVY
4105-03



ROYAL
4105-02



A promotional photograph for 3N2 Sports featuring two female softball players. The player on the left has long blonde hair and is wearing a black jersey with white accents and white pants. The player on the right has long dark hair and is wearing a red jersey with white accents and grey pants. They are standing on a field with a blurred background of stadium seating. The text 'STOCK UNIFORMS' is overlaid in large, white, bold, italicized letters across the center of the image.

**STOCK
UNIFORMS**

KZONE TWO-BUTTON HENLEY

NAVY
2090A/Y-03

Light, breathable KZONE™ two-button, moisture management henley. Versatile and stylish, serves well as a practice, hitting, or game jersey. Best used for screen-printing embellishment. 100% polyester.

COLORS: Navy, White, Royal, Red, Black, Forest Green

MEN'S SIZING: Adult XS - XXXL | Youth S - L

SKU: Adult 2090A | **MSRP:** \$19.99

SKU: Youth 2090Y | **MSRP:** \$18.99



WHITE
2090A/Y-06

ROYAL
2090A/Y-02

RED
2090A/Y-35

BLACK
2090A/Y-01

FOREST GREEN
2090A/Y-15

EMOTION TWO-BUTTON HENLEY

BLACK/WHITE
3000A/Y-0106

100% Polyzone™ raglan-sleeve, two-button henley. Features KZONE™ moisture management system to keep you dry and comfortable whatever the temperature. Offers white panel inserts under arm, and white contrasting shoulder piping to accent the underarm panels. Double-stitched hem with extra long drop tail body. 3N2 locker tag on lower left front. Best used for screen-printing embellishment.

COLORS: Black/White, Royal/White, Red/White, White/Grey/White, Navy/White, Forest Green/White

MEN'S SIZING: Adult XS - XXXL | Youth S - L

SKU: Adult 3000A | **MSRP:** \$29.99

SKU: Youth 3000Y | **MSRP:** \$24.99



ROYAL/WHITE
3000A/Y-0206

RED/WHITE
3000A/Y-3506

WHITE/GREY/WHITE
3000A/Y-0606

NAVY/WHITE
3000A/Y-0306

FOREST GREEN/WHITE
3000A/Y-1506

KZONE PANEL UNIFORM

WHITE/ROYAL
3205-0602

KZONE™ KEEPS YOU COOL. Loose-fitting, short sleeve KZONE™ performance wear quickly wicks moisture away from your skin, keeping you dry and comfortable during workouts. Features 100% Polyzone™ microfiber construction with a 4" color panel that offers unique color combination customization.

COLORS: White/Royal, White/Black, White/Red, White/Navy, White/Forest Green, White/Maroon, Royal/White, Red/White, Navy/White, Forest/White, Maroon/White

MEN'S SIZING: Adult XS - XXXL | Youth S - L

SKU: Adult 3205 | **MSRP:** \$19.99



WHITE/BLACK
3205-0601



WHITE/RED
3205-0635



WHITE/NAVY
3205-0603



WHITE/FOREST
3205-0615



WHITE/MAROON
3205-0611



ROYAL/WHITE
3205-0206



RED/WHITE
3205-3506



NAVY/WHITE
3205-0306



FOREST/WHITE
3205-1506



MAROON/WHITE
3205-1106

MEN'S SLEEVELESS JERSEY

RED
2040A-35

No sleeves means less heat. Stay cool and dry with this full-button, sleeveless jersey, composed of 100% polyester Clutch Stretch Mesh. 3N2 logos appear at the back neck yoke and front hem, leaving jerseys open for tackle twill or screen print embellishing.

COLORS: White, Red, Royal, Navy, Black

MEN'S SIZING: Adult XS - XXXL | Youth S - L

SKU: Adult 2040A | **MSRP:** \$24.99



BLACK
2040A-01



WHITE
2040A-06



NAVY
2040A-03



ROYAL
2040A-02

FULL-BUTTON SHORT SLEEVE JERSEY

WHITE/BLACK
2085A/Y-0601

100% polyester Clutch Stretch Mesh jersey. Features shoulder and underarm color inserts and full-button front. Center buttons are spaced 6" apart for ease of tackle twill application. 3N2 locker tag on front hem and 3N2 logo embroidered on back neck yoke. Suitable for either tackle twill or screen print embellishment.

COLORS: White/Black, Black/White, Red/White, Navy/White, Royal/White, White/Navy, White/Royal, White/Red, White/Forest Green, Forest Green/White

MEN'S SIZING: Adult XS - XXXL | Youth S - XL

SKU: Adult 2085A | **MSRP:** \$34.99

SKU: Youth 2085Y | **MSRP:** \$29.99



BLACK/WHITE
2085A/Y-0106



RED/WHITE
2085A/Y-3506



NAVY/WHITE
2085A/Y-0306



ROYAL/WHITE
2085A/Y-0206



FOREST
GREEN/WHITE
2085A/Y-1506



WHITE/NAVY
2085A/Y-0603



WHITE/RED
2085A/Y-0635



WHITE/FOREST
2085A/Y-0615



WHITE/ROYAL
2085A/Y-0602



POLY PANTS WITH ELASTIC HEM

WHITE
2570A/Y-06

100% polyester 12-ounce micro yarn pant with 31"-34" adult inseam (26" youth inseam). Non-roll woven elastic waist. Metal zippered fly front with two snap closure. Double-ply knees. Elastic hem ankle finish. Single back pocket with 3N2 embroidered logo. Add outer seam piping for additional charge.

COLORS: White, Grey

MEN'S SIZING: Adult S - XXXL | Youth S - XL

SKU: Adult 2570A | **MSRP:** \$34.99

SKU: Youth 2570Y | **MSRP:** \$29.99



GREY
2570A/Y-05



BAGGY FIT PRO POLY PANTS

WHITE
2520A-06

A baggy fit pant made with 14-ounce terry micro yarn 100% polyester. Pants feature longer rise and extra long inseam (33"-36") with double front belt loops that provide a cut popular in today's youth baseball and adult slowpitch fields. Non-roll woven elastic waist. Metal zippered fly front with two snap closure and two set-in back pockets. Double-ply knees. Adjustable Velcro open hem allows for inseam adjustment to meet individual inseam performance needs. 3N2 logo embroidered on left pocket. Add outer seam piping at an additional charge.

COLORS: White, Grey, Black

MEN'S SIZING: Adult S - XXXL

SKU: Adult 2520A | **MSRP:** \$39.99



GREY
2520A-05



BLACK
2520A-01



PRO POLY PANTS

GREY
2540A/Y-05

A traditional cut ankle length pant made with high performance 14-ounce terry micro yarn 100% polyester. Pants feature 32"-35" adult inseam (27"-28" youth inseam) with double front belt loops, non-roll woven elastic waist, metal zippered fly front with two snap closure, two set-in back pockets, double-ply knees. Open unhemmed ankle finish with no elastic. 3N2 logo embroidered on left pocket. Add outer seam piping and/or elastic ankle hem finish at an additional charge.

COLORS: Grey, White

MEN'S SIZING: Adult S - XXXL | Youth S - XL

SKU: Adult 2540A | **MSRP:** \$39.99

SKU: Youth 2540Y | **MSRP:** \$34.99



WHITE
2540A/Y-06



YOUTH PULL-UP PANTS

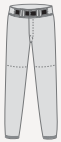
WHITE
2580Y-06

100% polyester 11-ounce micro yarn starter pant with elastic waistband, metal zippered fly with two snap closure, and waistband drawstring. Perfect starter pant for the young athlete in your household. Features an elastic ankle hem, and double-ply knee. Outer seam piping may be added for an additional charge.

COLORS: White, Grey

YOUTH SIZING: Youth XS - XL

SKU: Youth 2580Y | **MSRP:** \$14.99



GREY
2580Y-05



YOUTH OPEN HEM PANTS

GREY
2590Y-05

100% 11-ounce double knit rod polyester starter pant with 24"-28" inseams. Non-roll woven elastic waist. Metal zippered fly front with two snap closure. Double-ply knees. Adjustable Velcro hem allows for inseam adjustment to meet individual inseam performance needs. 3N2 logo embroidered on back pocket. Add outer seam piping for additional charge.

COLORS: Grey, White

YOUTH SIZING: Youth S - XL

SKU: Youth 2590Y | **MSRP:** \$24.99



WHITE
2590Y-06



WOMEN'S SLEEVELESS JERSEY

BLACK/WHITE
2200W/G-0106

100% polyester, KZONE™ moisture management, v-neck sleeveless jersey. Features slimming side insert panels, a comfortable sleeveless fit for full range of motion, and a 3N2 logo heat transferred on to center neckline. Open jersey front ideal for screen print embellishment.

COLORS: Black/White, White/Black, Navy/White,

Red/White, Royal/White, Forest Green/White

WOMEN'S SIZING: Adult XS - XXL | Youth S - L

SKU: Adult 2200W | **MSRP:** \$24.99

SKU: Youth 2200G | **MSRP:** \$19.99



WHITE/BLACK
2200W/G-0601

NAVY/WHITE
2200W/G-0306

RED/WHITE
2200W/G-3506

ROYAL/WHITE
2200W/G-0206

FOREST/WHITE
2200W/G-1506

WOMEN'S RACERBACK V-NECK JERSEY

RED
2350W/G-35

The **RACERBACK V-NECK** features 100% polyester, KZONE™ moisture management material in the front for dryness, supporting 100% polyester Clutch Stretch Mesh on the shoulders and back to maintain coolness, plus a breathable V-Neck for added coolness and comfort. Stylized with color dashes on the sides and garnished with a 3N2 logo at left clavicle, the front is unobstructed for custom screen print logos and embellishment.

COLORS: Red, Black, Navy, White, Royal, Forest Green

WOMEN'S SIZING: Adult XS - XXL | Youth S - L

SKU: Adult 2350W | **MSRP:** \$24.99

SKU: Youth 2350G | **MSRP:** \$19.99



BLACK
2350W/G-01

NAVY
2350W/G-03

WHITE
2350W/G-06

ROYAL
2350W/G-02

FOREST GREEN
2350W/G-15

WOMEN'S TWO-BUTTON HENLEY JERSEY

WHITE
2400W/G-06

Two-button henley featuring 100% polyester Polyzone™ moisture management front panel with Clutch Stretch Mesh side, arm, and full back panels for enhanced breathability and ventilation. 3N2 logo embroidered left sleeve. Ideal for either tackle twill or screen print embellishment.

COLORS: White, Black, Navy, Red, Royal, Forest Green

WOMEN'S SIZING: Adult XS - XXL | Youth S - L

SKU: Adult 2400W | **MSRP:** \$29.99

SKU: Youth 2400G | **MSRP:** \$24.99



BLACK 2400W/G-01 NAVY 2400W/G-03 RED 2400W/G-35 ROYAL 2400W/G-02 FOREST GREEN 2400W/G-15

WOMEN'S FAUX FULL-BUTTON JERSEY

WHITE
2500W/G-0601

Similar to men's full-button (SKU 2085), 100% polyester Clutch Stretch Mesh jersey. Offers shoulder and underarm color inserts. Faux full-button front with single top-button and bottom-button open finish. Features 3N2 locker tag on front hem and 3N2 logo embroidered on back neck yoke. Suitable for either tackle twill or screen print embellishment.

COLORS: White, Black, Red, Navy, Royal, Forest Green

WOMEN'S SIZING: Adult XS - XXL | Youth S - L

SKU: Adult 2500W | **MSRP:** \$34.99

SKU: Youth 2500G | **MSRP:** \$24.99



BLACK 2500W/G-0106 RED 2500W/G-3506 NAVY 2500W/G-0306 ROYAL 2500W/G-0206 FOREST GREEN 2500W/G-1506

WOMEN'S NuFIT KNICKERS

WHITE
2670-06

Up until now, women's knickers have been designed through reverse engineering: Take a man's pant. Make it smaller. Make it pink. The result? Ill-fitting, poor-performing pants. You've seen them. You've probably worn them. Introducing the **3N2 NuFIT KNICKER** – an innovative, fit-meets-function pant designed with the female form in mind. Knickers are traditionally made entirely of polyester. This means no stretch, no support, and no movement in areas that are supposed to move. The NuFit Knicker features 4-way stretch poly-spandex fabric in the hips, thighs, calves, and backside that snugly hugs curves and allows for free and easy movement. A rugged double-ply poly is used in the areas that need to be tough – the knees and outside of the leg – to protect the high abrasion areas from sliding. Added comfort comes courtesy of a low-rise fit in the front, a higher rise in back to ensure coverage, and a poly-spandex cuff that doesn't rub or cut like traditional elastic band cuffs.

COLORS: White, Black, Navy, Red, Royal

WOMEN'S SIZING: Adult XS - XXL | Youth S - L

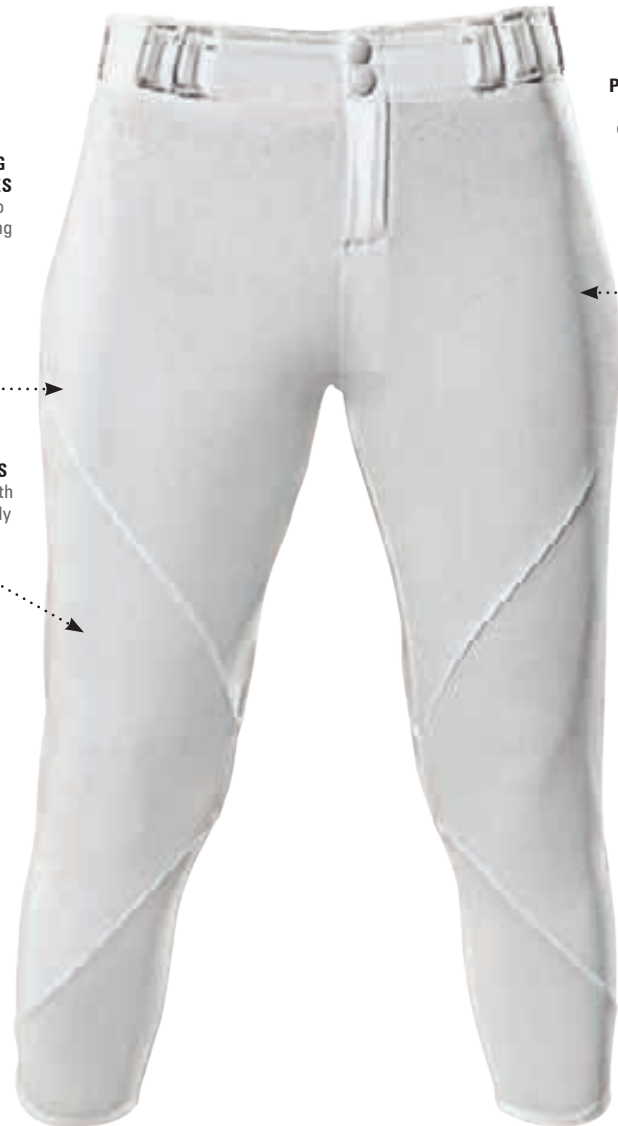
FULL-LENGTH KNICKER SKU: 2670 | **MSRP:** \$44.99

PATENT PENDING

FLATTERING DESIGN LINES
Flat seams to prevent chafing

SLIDE ZONES
Reinforced with double-ply poly warp knit

POLY SPANDEX
For a snug but comfortable fit



LOWER FRONT RISE
for comfort

HIGHER BACK RISE
for coverage

2 BACK POCKETS

SLIDE ZONES
Reinforced with double-ply poly warp knit



BLACK
2670-01



NAVY
2670-03



RED
2670-35



ROYAL
2670-02

WOMEN'S NuFIT 3/4 KNICKERS

The **3N2 NuFIT 3/4 KNICKER** offers some additional options on the original NuFit Knicker while maintaining its innovative, fit-meets-function pant designed with the female body in mind. The NuFit 3/4 Knicker comes with an inseam length that finishes just below the knee in two waist styles - with and without belt loops. These knickers also feature the 4-way stretch poly-spandex fabric in the hips, thighs, calves, and backside that snugly hugs curves and allows for free and easy movement. A rugged double-ply poly is used in the areas that need to be tough – the knees and outside of the leg – to protect the high abrasion areas from sliding. Added comfort comes courtesy of a low-rise fit in the front, a higher rise in back to ensure coverage, and a poly-spandex cuff that doesn't rub or cut like traditional elastic band cuffs.

COLORS: White, Black, Navy, Red, Royal

WOMEN'S SIZING: Adult XS - XXL | Youth S - L

3/4 KNICKER W/O BELT LOOPS SKU: 2660W | **MSRP:** \$34.99

3/4 KNICKER W/BELT LOOPS SKU: 2665W | **MSRP:** \$39.99

PATENT PENDING



1 1/2" ELASTIC BELT

Elastic belt and matching leather tab ends with nickel-plated buckle. Fully adjustable.

COLORS: Red, Black, White, Silver, Royal, Navy, Columbia, Cardinal, Maroon, Kelly Green, Dark Green, Purple, Orange, Burnt Orange, Brown, Gold, Athletic Gold, Vegas Gold

ADULT: One Size Fits All (32" - 46" waist)

YOUTH: One Size Fits All (18" - 32" waist)

SKU: Adult 2999A | **MSRP:** \$7.99

SKU: Youth 2999Y | **MSRP:** \$6.99





SCOTT COUSINS
LOS ANGELES ANGELS

ACCESSORIES

FULL-LENGTH SOCKS

ROYAL
4200-02

3N2 FULL-LENGTH SOCKS are made of ultra-comfortable poly-cotton with elastane and feature a highly efficient moisture management finish that will keep you dry and comfortable when the pressure is on. Advanced stitching reinforces arch and ankle support and reduces foot fatigue.

COLORS: Royal, Black, Forest Green, Maroon, Navy, Red, Orange, White, Pink

MEN'S SIZING: S (1-5), M (6-9), L (9.5-12), XL (12.5-15)

MSRP: \$9.99



BLACK
4200-01



FOREST GREEN
4200-15



MAROON
4200-11



NAVY
4200-03



RED
4200-35



ORANGE
4200-09



WHITE
4200-06



PINK
4200-10



ANKLE SOCKS

BLACK
4210-01



WHITE
4210-06



3N2 ANKLE SOCKS are made of ultra-comfortable poly-cotton with elastane and feature a highly efficient moisture management finish that will keep you dry and comfortable when the pressure is on. Advanced stitching reinforces arch and ankle support and reduces foot fatigue.

COLORS: Black, White

MEN'S SIZING: S (1-5), M (6-9), L (9.5-12), XL (12.5-15)

MSRP: \$7.99

SLIDE SHOWER SANDAL

BLACK
5100-01



WHITE
5100-06



The wear-anywhere **SLIDE SHOWER SANDAL** is ultra-light, 100% water resistant and features an injection molded EVA outsole for maximum cushion and comfort. A suede strap with Velcro® closure allows you to customize the fit. Strap features a cushioned foam underside and an outer layer of KZONE™ fabric to keep you cool.

COLORS: Black, White

MEN'S SIZING: 4-15 Full Sizes Only (Women order one size down)

WEIGHT: 4.6 ounces

MSRP: \$24.99

FLEX-FIT CAP

The one-size-fits-all **FLEX-FIT CAP** features 6-panel construction, an embroidered logo and elasticized headband for superior comfort.

MSRP: \$14.99 | **SIZING:** One Size Fits All

COLORS: White/Black, Black/Silver, Red/Silver, Black/Orange



WHITE/BLACK
3600-0601



BLACK/SILVER
3600-0114



RED/SILVER
3600-35



BLACK/ORANGE
3600-0109

FLEX-FIT CLASSIC TRUCKER CAP

When you've got a long way to go and a short time to get there, the **FLEX-FIT CLASSIC TRUCKER CAP** has you covered. Features a bendable brim with breathable mesh back, embroidered logo, and one-size-fits-all comfortable Flex-Fit. Slap this baby on and you'll be east bound and down.

MSRP: \$15.99 | **SIZING:** Youth (6^{3/8} - 6^{7/8}), S/M (7 - 7^{3/8}), L/XL (7^{1/2} - 8)

COLORS: Black/White, Royal/White, Red/White



BLACK/WHITE
3650-0106



ROYAL/WHITE
3650-0206



RED/WHITE
3650-3506

FLEX-FIT TEAM TRUCKER CAP

The same attitude and comfy flex-fit of our classic trucker cap, only with a blank front face you can customize to your heart's desire. Features bendable brim and breathable mesh back.

MSRP: \$14.99 | **SIZING:** Youth (6^{3/8} - 6^{7/8}), S/M (7 - 7^{3/8}), L/XL (7^{1/2} - 8)

COLORS: Red/White, Royal/White, Black/White



RED/WHITE
3651-3506



ROYAL/WHITE
3651-0206



BLACK/WHITE
3651-0106



3N2 VISOR

100% cotton garment-washed **3N2 VISORS** are one-size-fits-all and feature a low crown, baseball cap visor design.

MSRP: \$14.99 | **SIZING:** One Size Fits All

COLORS: Black/Silver, Black/Orange, Red/Silver, White/Black



BLACK/SILVER
3700-0114



BLACK/ORANGE
3700-0109



RED/SILVER
3700-35



WHITE/BLACK
3700-0601

3N2 GAMEDAY VISOR

It's game day. Beat the heat with the **3N2 GAMEDAY VISOR**. Features 100% polyester, moisture-wicking fabric, two-panel construction and a pre-curved bill. Ideal for embellishments.

MSRP: \$17.99 | **SIZING:** One Size Fits All

COLORS: Red, Navy, White, Royal, Black



RED
3750-35



NAVY
3750-03



WHITE
3750-06



ROYAL
3750-02



BLACK
3750-01

3N2 SWEATBANDS

The advanced fiber weave in our 3N2 performance **SWEATBANDS** ensures a comfortable fit and rapid evaporation. Features an embroidered 3N2 logo. Comes in two sizes: 2.5" and 4".

MSRP: \$6.99 | **SIZING:** One Size Fits All

COLORS: Red, Royal, White, Black



RED
3510-35



ROYAL
3510-02



WHITE
3510-06



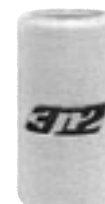
BLACK
3510-01



RED
3500-35



ROYAL
3500-02



WHITE
3500-06



BLACK
3500-01

PRO GLOVES

BLACK/WHITE
3810-0106

A must-have for the serious slugger. Point to the cheap seats and blast one out of the park with our advanced-grip **3N2 PRO GLOVES**. Features highest grade "A" sheepskin leather, METAMESH venting for maximum breathability, rubber-reinforced strap closure with triangle palm location for athlete customization, and digitized imprints for a solid grip in all weather conditions.

MSRP: \$29.99 | **SIZING:** YM, YL, XS, S, M, L, XL, XXL

COLORS: Black/White, Navy/White, Red/White, Royal/White, White/White



NAVY/WHITE
3810-0306

RED/WHITE
3810-3506

ROYAL/WHITE
3810-0206

WHITE/WHITE
3810-0606



PRO VICE 1

WHITE/NAVY
3820-0603

They'll know it's going to the nosebleeds when you step to the plate in the **PRO VICE 1**. These are sluggers' gloves. Grade "A" sheepskin leather and METAMESH technology combine for durability and comfort, while the reinforced strap and triangle palm location ensure a snug, custom fit every time. And with digitized imprints from palm to fingertip, your grip is good no matter what the weather conditions. Going. Going. Still going. Gone.

MSRP: \$39.99 | **SIZING:** YM, YL, XS, S, M, L, XL, XXL, XXXL

COLORS: White/Royal, White/Black, White/Red, White/Green, White/Navy



WHITE/BLACK
3820-0601

WHITE/RED
3820-0635

WHITE/GREEN
3820-0614

WHITE/ROYAL
3820-0602



CUSTOMIZABLE BACK PAK

BLACK
3920-01

Hit the road with the rugged **3N2 CUSTOMIZABLE BACK PAK**. Constructed from heavy-duty 600-denier polyester, it features a huge main compartment with a mesh pocket, large liner pocket with Velcro® fastener, two pockets for valuables and an MP3 player pocket with interior-to-exterior port for headphone wires. Back Pak exterior holds 2 bats, features 2 mesh beverage holders and has a double-reinforced metal clasp hook for easy hanging in lockers or on ballpark fences. A large 12 x 12-inch removable exterior pocket allows you to customize your bag with your team color or a silkscreen or embroidery of your team logo. Back Pak sold standard with one color pocket. Additional color pockets are sold separately.

MSRP: \$54.99

DIMENSIONS: 22" L x 16" W x 7" H

BASE COLORS: Black, Red, Navy, Royal

POCKET COLORS: Black, Columbia, Green, Navy, Orange, Red, Vegas Gold, Pink, Purple, Royal, Silver, Maroon, Athletic Gold



RED
3920-35



NAVY
3920-03



ROYAL
3920-02



ADDITIONAL COLOR POCKETS

MSRP: \$9.99



SLING BAG

BLACK
3910-01

Light weight and water resistant, the **3N2 SLING BAG** features an embroidered 3N2 logo, mesh construction and easy-carry straps. Perfect for damp gear or day-trip accessories.

MSRP: \$14.99

COLORS: Black



WHEELED BUDDY BAG

BLACK
3951-01

The ultimate bat bag. The 37 x 12 x 12-inch 3N2 customizable **WHEELED BUDDY BAG** is constructed from 600-denier polyester for unprecedented durability and features exterior compartments that hold two bats apiece (six bats total). Zip-off exterior side panels allow you to customize your bag with a silkscreen of your team's logo or alternate color panel. The tri-level interior shelving system intelligently divides the main storage area, which also features a side wing pocket for storing valuables and a top exterior zip compartment. The bag's versatility and functionality are second to none. It features four lightweight clasps, a rugged Nylon hang handle, heavy-duty zippers and a shoulder harness for transport.

MSRP: \$79.99 | **ADDITIONAL COLOR POCKETS MSRP:** \$12.99

DIMENSIONS: 37" L x 12" W x 12" H

BASE COLORS: Black, Red, Royal, Navy

POCKET COLORS: Silver with: Orange, Red, Maroon, Navy, Royal, Green, Black, Columbia, Purple, Vegas Gold, Athletic Gold, Pink



RED
3951-35



ROYAL
3951-02



NAVY
3951-03



ADDITIONAL COLOR POCKETS

MSRP: \$12.99



ORANGE
3952-09



RED
3952-35



MAROON
3952-11



NAVY
3952-03



ROYAL
3952-02



GREEN
3952-14



BLACK
3952-03



COLUMBIA
3952-13



PURPLE
3952-12



VEGAS GOLD
3952-27



ATHLETIC GOLD
3952-07



PINK
3952-10

GO BAG

BLACK/SILVER
3900-01

Whether you're in the dugout or on the road, the rugged, multi-compartment **3N2 GO BAG** has your gear covered. Versatile and spacious, the GO BAG features variable-terrain inline wheels for effortless transport, holds up to six bats — four in removable protective sleeves — and comes equipped with a retractable trolley handle, mesh footwear insert, padded shoulder harness and two heavy duty hooks for hanging.

MSRP: \$99.99 | **DIMENSIONS:** 38" L x 13" W x 12" D

COLORS: Black/Silver, Royal/Silver

ROYAL/SILVER
3900-02



BIG BAG

BLACK
3960-01

Big, simple and functional. The **3N2 BIG BAG** is ideal for those who need a traditional, straightforward equipment bag. Its huge interior compartment is the perfect place to stuff your stuff. Features two zippered side compartments, a padded shoulder strap, roller wheels for easy transport and bottom rails to protect against wear and tear. This 35 x 17 x 15-inch bag is manufactured from rugged 600-denier polyester and features open surfaces for team logo screen printing or embroidery*.

MSRP: \$59.99 | DIMENSIONS: 35" L x 17" W x 15" H
COLORS: Black, Navy

*Screen printing and embroidery not included.



NAVY
3960-03



DUFFLE BAG

BLACK/SILVER
3961-0104

The versatile **3N2 DUFFLE BAG** is perfectly suited for training or team travel. Large enough to carry your gear to and from workouts while offering two end pockets large enough to store gloves, balls, footwear or wet gear. Easy access top-load functionality, along with shoulder strap or arm straps with Velcro® enclosure, make the duffle bag an easy "grab-and-go" essential.

MSRP: \$34.99 | DIMENSIONS: 36" L x 9" W x 9.5" D
COLORS: Black/Silver, Royal/Silver, Navy/Silver, Red/Silver



ROYAL/SILVER
3961-0204



NAVY/SILVER
3961-0304



RED/SILVER
3961-3504





**OFFICIATING
FOOTWEAR & APPAREL**

REACTION LO

BLACK (WIDTH D) 7335-0101



With its wear-resistant, easily polished 100% genuine leather construction, the **REACTION LO** is a great call for the officiating professional with an eye on comfort and durability. Its lightweight, compression-molded EVA midsole has been specifically designed to reduce the knee and joint stress associated with prolonged standing.

MSRP: \$54.99

MEN'S SIZING: 6-12.5, 13, 14, 15

WEIGHT: 12.8 ounces

WIDTH: D, EE



BLACK (WIDTH EE) 7335-0101E

REACTION REFEREE

BLACK (PATENT LEATHER) 7375-0101



With its wear-resistant, easily polished 100% genuine leather or patent leather upper construction, the **REACTION REFEREE** is a great call for the referee with an eye on comfort and durability. Its lightweight, compression-molded EVA midsole has been specifically designed to reduce the knee and joint stress associated with prolonged standing. Low-profile, flat bottom, non-marking outsole is purpose built for indoor sports such as basketball and volleyball. Comes in Genuine leather or Patent leather.

MSRP: \$64.99

MEN'S SIZING: 6-12.5, 13, 14, 15

WEIGHT: 12.2 ounces

WIDTH: D



BLACK (GENUINE LEATHER) 7365-0101

REACTION PRO PLATE LO

BLACK (WIDTH D) 7345-0101



With its wear-resistant, highly polishable, 100% genuine leather construction, the **REACTION PRO PLATE LO** is a great call for the officiating professional with an eye on comfort and protection — the legendary comfort of a 3N2 turf shoe and the protection of a rugged, impact-absorbing, thermo-molded toe. At only 15.7 ounces per shoe, it may be the lightest plated umpire shoe in the game. Its trademark midsole has been specifically designed to reduce the knee and joint stress associated with game-after-game action. Features the black on black color scheme umpires prefer and is designed to minimize dirt build-up for easy cleaning.

MSRP: \$89.99

MEN'S SIZING: 6-12.5, 13, 14, 15

WEIGHT: 15.7 ounces

WIDTH: D, EE



BLACK (WIDTH EE) 7345-0101E

REACTION PRO PLATE MID

BLACK (WIDTH D) 7355-0101



With its wear-resistant, highly polishable, 100% genuine leather construction, the **REACTION PRO PLATE MID** is a great call for the officiating professional with an eye on comfort and protection — the legendary comfort of a 3N2 turf shoe and the protection of a rugged, impact-absorbing, thermo-molded toe. At only 18.7 ounces per shoe, it may be the lightest plated umpire shoe in the game. Its trademark midsole has been specifically designed to reduce the knee and joint stress associated with game-after-game action. Features the black on black color scheme umpires prefer and is designed to minimize dirt build-up for easy cleaning.

MSRP: \$94.99

MEN'S SIZING: 6-12.5, 13, 14, 15

WEIGHT: 18.7 ounces

WIDTH: D, EE



BLACK (WIDTH EE) 7355-0101E

UMPIRE POLO SHIRT

COLUMBIA/BLACK
3110-1301

The classic, stylish **UMPIRE POLO SHIRT** is always the right call. Features 100% polyester textured mesh, 3-button placket, and rib knit collar and sleeve ends. Extended tail with side vents provides added comfort while a left chest pocket for line up card adds essential functionality.

MSRP: \$27.99 | **SIZING:** S, M, L, XL, XXL, XXXL, XXXXL

COLORS: Columbia/Black, Black, Red, Navy, Columbia, Cream



BLACK
3110-01

RED
3110-35

NAVY
3110-03

COLUMBIA
3110-1313

CREAM
3110-20

UMPIRE V-NECK PULLOVER

BLACK
7100-01

The durable, lightweight **3N2 V-NECK PULLOVER** features water resistant 100% polyester Taslan construction with a comfortable fabric cotton lining. Additional features include a rib knit collar, arm cuff and waistband finishes and side seam pockets. Order up one full size if used with a chest protector.

MSRP: \$44.99 | **SIZING:** S, M, L, XL, XXL, XXXL, XXXXL

COLORS: Black, Navy



NAVY
7100-03

UMPIRE HALF ZIP JACKET

NAVY/COLUMBIA
7200-0313

Focus on the count – not on staying warm – with our **UMPIRE HALF ZIP JACKET**. This zippered pullover features a micro-fiber shell and offers stand-up collar, Nylon lining, side seam pockets, elastic waistband and contrasting rib knit over the shoulders. Oversized, comfortable fit for easy layering.

MSRP: \$49.99 | **SIZING:** S, M, L, XL, XXL, XXXL, XXXXL

COLORS: Navy/Columbia, Black/White, Navy/Red



BLACK/WHITE
7200-01



NAVY/RED
7200-03



UMPIRE COMBO PANTS WITH EXPANDER WAIST

CHARCOAL GREY
7500-03

3N2 helps umpires make at least one call a little easier when it comes to attire. Loose enough for any leg guard, but not too loose as to inhibit motion, our grey **UMPIRE COMBO PANTS** are suitable for the intrinsic demands of officiating, both behind the plate and at the bases. Made of 100% Polyester, with 2-inch belt loops, front-zip fly, and pleated legs, and featuring a comfortable seat area, our officiating pants will keep you focused play after play.

MSRP: \$54.99 | **SIZING:** XS - XXXL

COLORS: Charcoal Grey

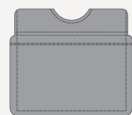


UMPIRE BALL BAG

NAVY
7900-03

The **3N2 UMPIRE BALL BAG** features heavy-duty, polyester Cordura construction with PVC back coating and double stitching in high-wear areas for season-after-season durability. Two inside pockets and two belt loops made to coordinate with standard umpire belts, provide added functionality. Dimensions are 12" at belt level, 13" at base of bag and 12" in height (from top of loops to base of bag). Holds 2 softballs or 5 baseballs comfortably.

MSRP: \$8.49 | **COLORS:** Navy, Grey, Black



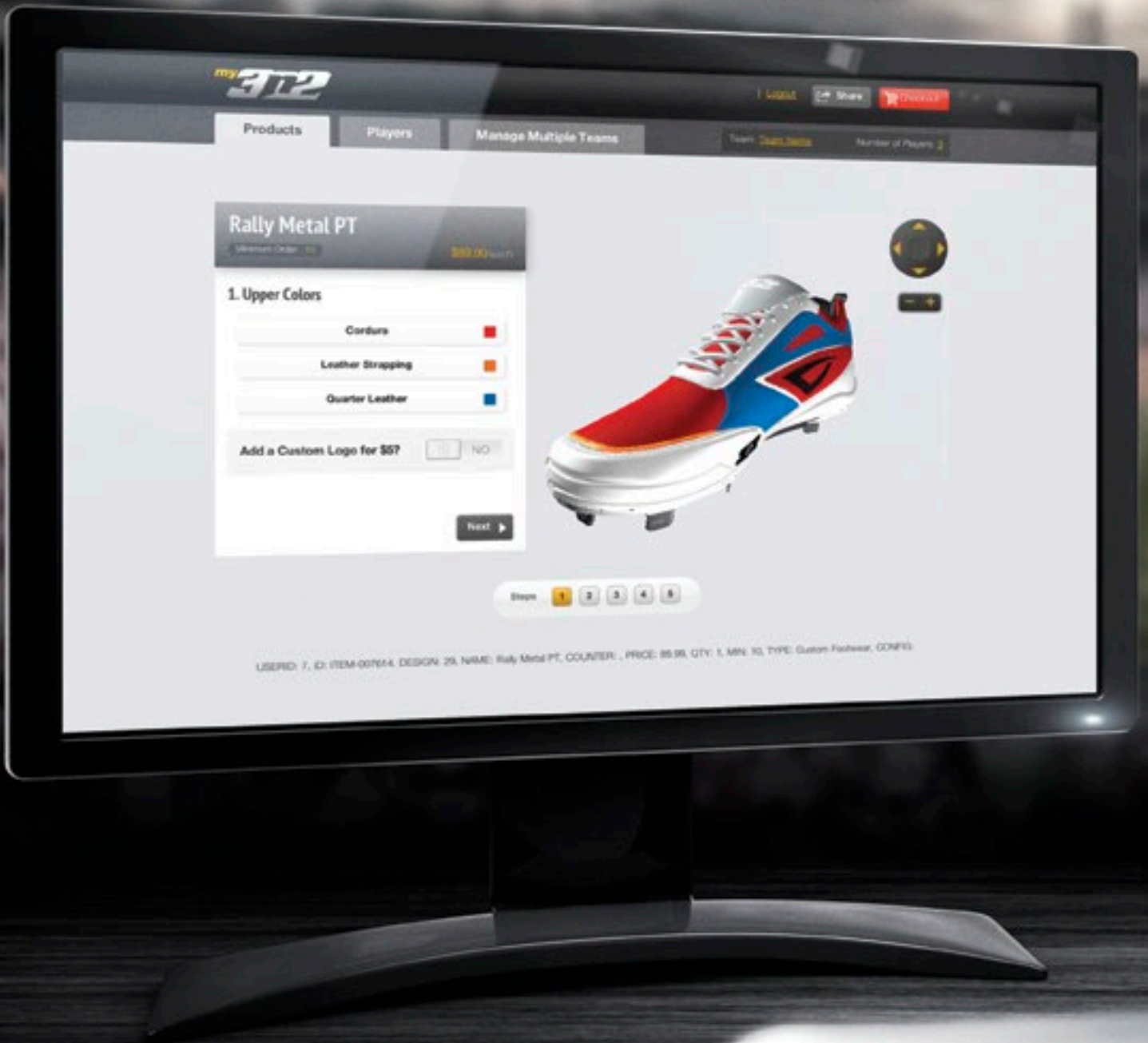
GREY
7900-05



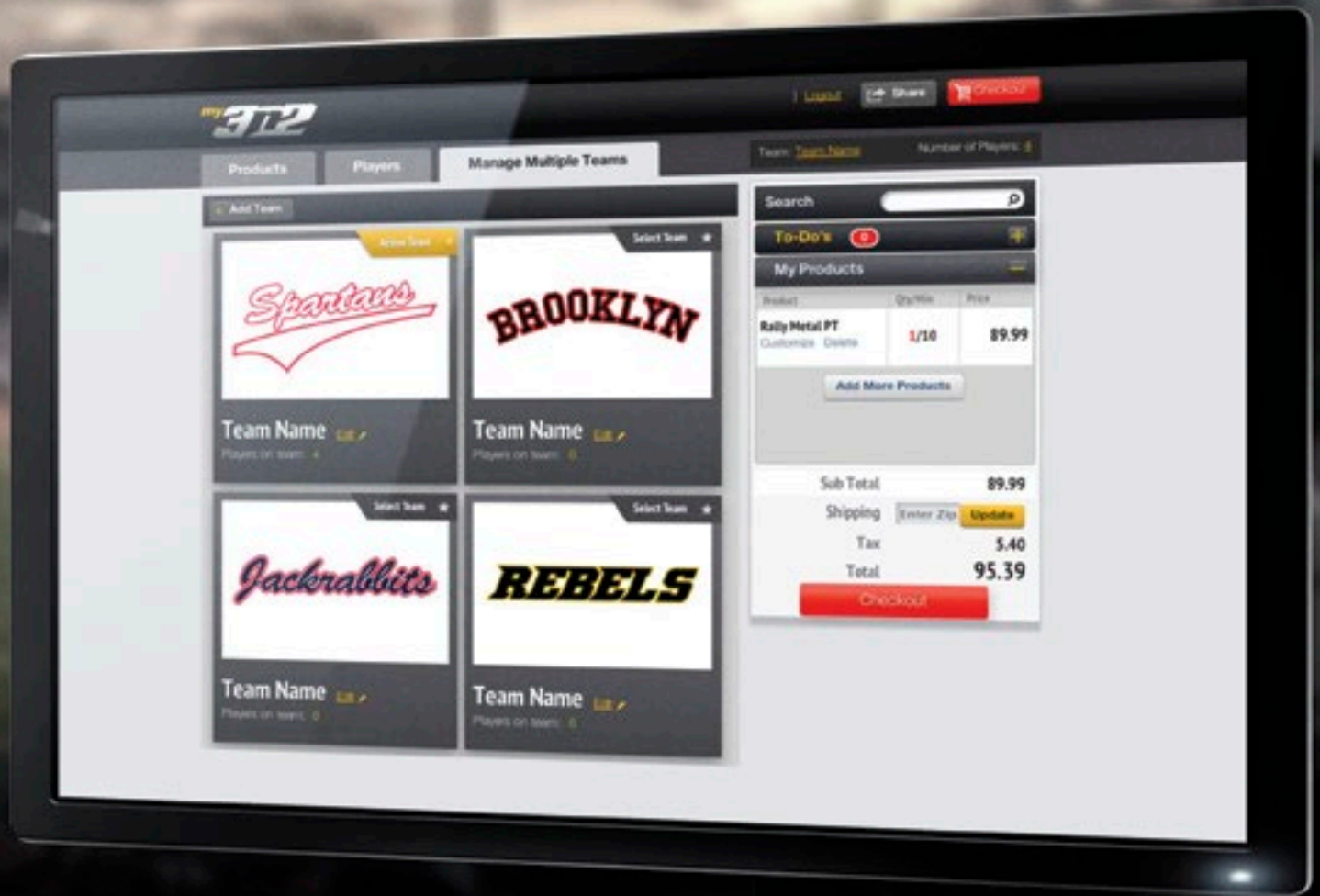
BLACK
7900-01



MY3N2.COM



MY3N2.COM | CUSTOMIZE COLORS | MAKE IT YOUR OWN | OUTFIT YOUR TEAM



CUSTOM FOOTWEAR



MINIMUM QUANTITIES: 10
PRODUCTION TIME: 4-6 WEEKS
CUSTOM LOGO APPLICATION

MY3N2.COM | CUSTOMIZE COLORS | MAKE IT YOUR OWN | OUTFIT YOUR TEAM

CUSTOM RALLY

Take your game to the next level with 3N2 Custom Footwear. 3N2's Custom Footwear program allows teams to personalize the full range of **RALLY** cleats with a vast array of color and customization options.



CHOOSE YOUR CANVAS



RALLY METAL

MSRP: \$120.00

WOMEN'S SIZING: 5-12 Half Sizes



RALLY METAL PT

MSRP: \$120.00

WOMEN'S SIZING: 5-12 Half Sizes



RALLY TPU

MSRP: \$120.00

WOMEN'S SIZING: 5-12 Half Sizes



RALLY TPU PT

MSRP: \$120.00

WOMEN'S SIZING: 5-12



RALLY PM

MSRP: \$120.00

MEN'S SIZING: 6-12.5, 13, 14, 15



RALLY PM TPU

MSRP: \$120.00

MEN'S SIZING: 5-12.5, 13, 14, 15

CUSTOM RALLY TRAINER PT

Take your game to the next level with 3N2 Custom Footwear. 3N2's Custom Footwear program allows teams to personalize the full range of **RALLY TRAINER PT** with a vast array of color and customization options.

MSRP: \$120.00

WOMEN'S SIZING: 5-12, Half Sizes



CUSTOM MOMENTUM

Take your game to the next level with 3N2 Custom Footwear. 3N2's Custom Footwear program allows teams to personalize the full range of **MOMENTUM** turf trainers with a vast array of color and customization options.



CHOOSE YOUR CANVAS



MOMENTUM LO

MSRP: \$110.00

MEN'S SIZING: 6-12.5 Half Sizes, 13, 14, 15 (Women order 1.5 size down)



MOMENTUM LO PATENT

MSRP: \$110.00

MEN'S SIZING: 6-12.5 Half Sizes, 13, 14, 15 (Women order 1.5 size down)



MOMENTUM MID

MSRP: \$110.00

MEN'S SIZING: 6-12.5 Half Sizes, 13, 14, 15 (Women order 1.5 size down)



MOMENTUM MID PATENT

MSRP: \$110.00

MEN'S SIZING: 6-12.5 Half Sizes, 13, 14, 15 (Women order 1.5 size down)

CUSTOM MOFO

Take your game to the next level with 3N2 Custom Footwear. 3N2's Custom Footwear program allows teams to personalize the full range of **MOFO** turf trainers with a vast array of color and customization options.

MSRP: \$110.00

MEN'S SIZING: 3.5-12.5 13,14, 15



CUSTOM APPAREL

MINIMUM QUANTITIES: VARIES BY STYLE

PRODUCTION TIME: 4-8 WEEKS

CUSTOM LOGO EMBROIDERY



MY3N2.COM | CUSTOMIZE COLORS | MAKE IT YOUR OWN | OUTFIT YOUR TEAM

RAIN PULLOVER

MSRP: \$54.99 | SIZING: Youth S-L / Men's XS-4XL

DELIVERY: 6-8 weeks | MINIMUM ORDER QUANTITY: 12



CUSTOMIZATION OPTIONS INCLUDE:

- Collar style: quarter zip or v-neck
- Primary and secondary colors
- Inner liner fabric selections: mesh, cotton, taffeta
- 3x3 embroidered logo included free of charge
- No embroidery set-up fees

BULLPEN PULLOVER

MSRP: \$44.99 | SIZING: Youth S-L / Men's XS-3XL

DELIVERY: 6-8 weeks | MINIMUM ORDER QUANTITY: 12



CUSTOMIZATION OPTIONS INCLUDE:

- Sleeve style: long sleeve or short sleeve
- Collar style: quarter zip or two-button
- Optional polyester mesh liner
- Primary and secondary colors
- 3x3 embroidered logo included free of charge
- No embroidery set-up fees

TRAINING JACKET/PANTS

MSRP: Jacket \$49.99 / Pants \$39.99 | SIZING: Youth S-L / Men's XS-3XL

DELIVERY: 6-8 weeks | MINIMUM ORDER QUANTITY: 12



CUSTOMIZATION OPTIONS INCLUDE:

- Outer shell fabric: taffeta, micro-fiber, or Taslan Nylon
- Outer shell colors: primary and secondary colors
- Inner liner fabric: mesh, cotton, or taffeta
- Inner liner fabric color
- 3x3 embroidered logo included free of charge
- No embroidery set-up fees

KZONE LOOSE FIT

MSRP: Short Sleeve / Sleeveless: \$34.99 / Long Sleeve \$39.99

SIZING: Youth M-L / Men's XS-3XL / Women's XS-2XL

DELIVERY: 4-6 weeks | MINIMUM ORDER QUANTITY: 6



CUSTOMIZATION OPTIONS INCLUDE:

- Neckline style: crew, v-neck or mock neck
- Sleeve style: sleeveless, short sleeve, long sleeve
- Fabric color option

KZONE PANEL SHIRT

MSRP: Short Sleeve/Sleeveless: \$39.99 / Long Sleeve \$44.99

SIZING: Youth M-L / Men's XS-3XL / Women's XS-2XL

DELIVERY: 4-6 weeks | **MINIMUM ORDER QUANTITY:** 6



CUSTOMIZATION OPTIONS INCLUDE:

Neckline style: crew, v-neck or mock neck
Sleeve style: sleeveless, short sleeve, long sleeve
Fabric and panel color option

DUGOUT POLO SHIRT

MSRP: Short Sleeve Button \$44.99 / Long Sleeve Button \$49.99 /

Short Sleeve ¼ Zip \$49.99 / Long Sleeve Quarter Zip \$54.99

SIZING: Youth M-L / Men's XS-3XL

DELIVERY: 4-6 weeks | **MINIMUM ORDER QUANTITY:** 6



CUSTOMIZATION OPTIONS INCLUDE:

Sleeve style: long sleeve or short sleeve
Collar style: quarter zip or two-button
Primary and secondary colors

SPIRIT PANTS

MSRP: \$44.99

SIZING: Youth S-L / Men's XS-3XL

DELIVERY: 6-8 weeks | **MINIMUM ORDER QUANTITY:** 12



CUSTOMIZATION OPTIONS INCLUDE:

Outer shell fabric: taffeta, micro-fiber, or Taslan Nylon
Outer shell color: primary and secondary color
Inner liner fabric: mesh, cotton, or taffeta
Inner liner fabric color
Left and right leg embroidery: lettering and colors
Hip logo for additional charge
No embroidery set-up fees

ROUNDTRIPR PANTS

MSRP: \$69.99

SIZING: Custom inseam and waist (in 2" increments)

DELIVERY: 4-6 weeks | **MINIMUM ORDER QUANTITY:** 6



CUSTOMIZATION OPTIONS INCLUDE:

Choose from 5 outseam pant patterns
Primary pant color option
Outseam pattern color options
Belt loop/tunnel piping and color options
Pocket binding color option

CUSTOM UNIFORMS

MINIMUM QUANTITIES: 6 PER STYLE

PRODUCTION TIME: 6-8 WEEKS

CUSTOM LOGOS



SUBLIMATED TACKLE TWILL OPTION
NO ADDITIONAL CHARGE

MY3N2.COM | CUSTOMIZE COLORS | MAKE IT YOUR OWN | OUTFIT YOUR TEAM

PANTHERS JERSEY

MSRP: \$120.00 | SIZING: Chest 26"-54" (in 2" increments)



SPARTANS JERSEY

MSRP: \$120.00 | SIZING: Chest 26"-54" (in 2" increments)



PANTHERS PANTS

MSRP: \$110.00 | SIZING: Waist: 22"-50" (in 2" increments)



SPARTANS PANTS

MSRP: \$110.00 | SIZING: Waist 22"-50" (in 2" increments)



DUCKS JERSEY

MSRP: \$120.00 | SIZING: Chest 26"-54" (in 2" increments)



TOROS JERSEY

MSRP: \$120.00 | SIZING: Chest 26"-54" (in 2" increments)



DUCKS PANTS

MSRP: \$110.00 | SIZING: Waist 22"-50" (in 2" increments)



TOROS PANTS

MSRP: \$110.00 | SIZING: Waist 22"-50" (in 2" increments)



T-BIRDS JERSEY

MSRP: \$120.00 | SIZING: Chest 26"-54" (in 2" increments)



CAVALIERS JERSEY

MSRP: \$120.00 | SIZING: Chest 26"-54" (in 2" increments)



T-BIRDS PANTS

MSRP: \$110.00 | SIZING: Waist 22"-50" (in 2" increments)



CAVALIERS PANTS

MSRP: \$110.00 | SIZING: Waist 22"-50" (in 2" increments)



CLINTON JERSEY

MSRP: \$120.00 | SIZING: Chest 26"-54" (in 2" increments)



CARDINALS JERSEY

MSRP: \$120.00 | SIZING: Chest 26"-54" (in 2" increments)



CARDINALS PANTS

MSRP: \$110.00 | SIZING: Waist 22"-50" (in 2" increments)



DIABLOS JERSEY

MSRP: \$120.00 | SIZING: Chest 26"-54" (in 2" increments)



VIKINGS JERSEY

MSRP: \$120.00 | SIZING: Chest 26"-54" (in 2" increments)



DIABLOS PANTS

MSRP: \$110.00 | SIZING: Waist 22"-50" (in 2" increments)



RHODES JERSEY

MSRP: \$120.00 | SIZING: Chest 26"-54" (in 2" increments)



RABBITS JERSEY

MSRP: \$120.00 | SIZING: Chest 26"-54" (in 2" increments)



RHODES PANTS

MSRP: \$110.00 | SIZING: Waist 22"-50" (in 2" increments)



SCOTS JERSEY

MSRP: \$120.00 | SIZING: Chest 26"-54" (in 2" increments)



TROJANS JERSEY

MSRP: \$120.00 | SIZING: Chest 26"-54" (in 2" increments)



SCOTS PANTS

MSRP: \$110.00 | SIZING: Waist 22"-50" (in 2" increments)



TROJANS PANTS

MSRP: \$110.00 | SIZING: Waist 22"-50" (in 2" increments)



TIGERS JERSEY

MSRP: \$120.00 | SIZING: Chest 26"-54" (in 2" increments)



BROOKLYN JERSEY

MSRP: \$120.00 | SIZING: Chest 26"-54" (in 2" increments)



TIGERS PANTS

MSRP: \$110.00 | SIZING: Waist 22"-50" (in 2" increments)



TWILL CUSTOM UNIFORMS

STARTER EDITION **\$89.99**

6-PIECE MINIMUM / 1-2 COLOR ONLY / PRODUCTION TIME: 6-8 WEEKS



STYLE BB1



STYLE BB2



STYLE BB3



STYLE BB4



1-2 COLOR TACKLE TWILL OPTIONS
SUBLIMATED TWILL OPTION
NOT AVAILABLE

4 BASE STYLES | 4 NECK STYLES | 5 FABRICS | 21 COLORS | UP TO 4 TWILL APPLICATIONS

CUSTOM SUBLIMATION

MINIMUM QUANTITIES: 10 PER STYLE

PRODUCTION TIME: 5-7 WEEKS

CUSTOM LOGOS



MY3N2.COM | CUSTOMIZE COLORS | MAKE IT YOUR OWN | OUTFIT YOUR TEAM

FULL-CUSTOM SUBLIMATED CREW NECK

Whatever your sport, full-custom sublimated jerseys offer you a nearly limitless way of personalizing your team's look.

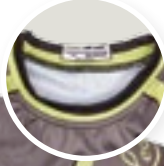
MSRP: \$54.99

YOUTH SIZING: YS - YXL

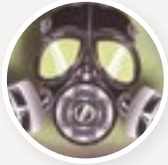
WOMEN'S SIZING: S - XXL

MEN'S SIZING: S - XXXL

CREW NECK STYLE



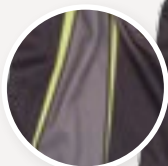
ADD YOUR LOGO



ADD YOUR NAME AND NUMBER



SELECT A PATTERN



FULL-BUTTON

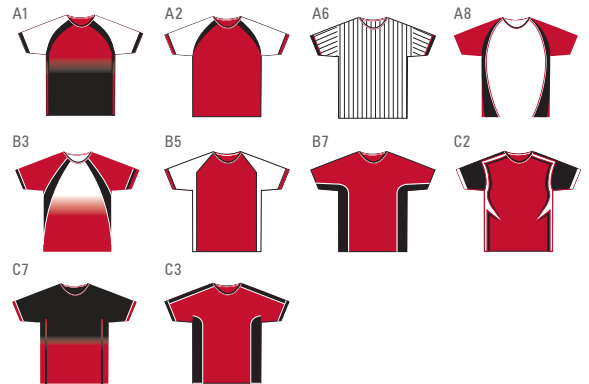
MSRP: \$79.99



TWO-BUTTON HENLEY

MSRP: \$69.99

EXAMPLE PATTERNS



FABRICS



WE SUGGEST:
GAMEDAY

POLYZONE™

PRO-WEIGHT POLY

TRIPLE THREAT

+ SEE MY3N2.COM FOR FULL RANGE OF PATTERNS AND CUSTOMIZATION OPTIONS

MEN'S SEMI-CUSTOM SUBLIMATED PANTS

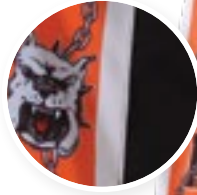
Great for baseball or softball, our semi-custom pants offer 3" sublimated panels that can be customized with a look designed by you.

MSRP: \$54.99

SIZING: 26" - 48" (in 2" increments)

MEN'S INSEAM: 36" is standard, however inseam can be tailored

SELECT LOGO

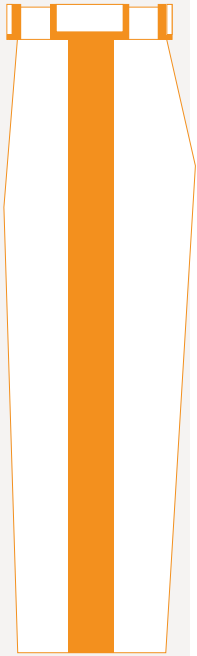


SELECT A PATTERN



EXAMPLE PATTERNS

STYLE A1



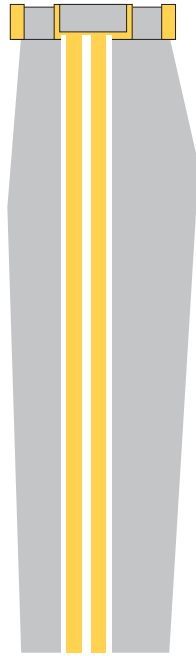
STYLE A2



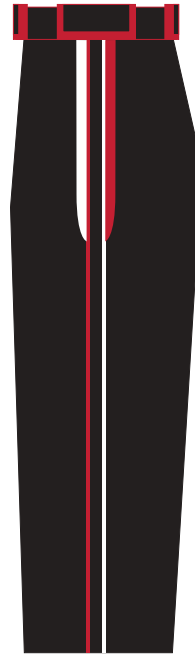
STYLE A6



STYLE A8



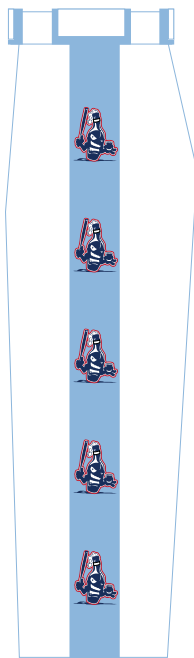
STYLE B3



STYLE B5



STYLE B7



STYLE C2



STYLE C7



STYLE C3



FABRIC



PRO-WEIGHT POLY

+ SEE MY3N2.COM FOR FULL RANGE OF PATTERNS AND CUSTOMIZATION OPTIONS

MEN'S FULL-CUSTOM SUBLIMATED PANTS

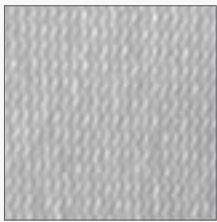
Creativity is calling. Take complete control of the design direction of our 3N2 fully sublimated custom pants featuring our durable Pro-Weight Poly fabric.

MSRP: \$99.99

SIZING: 26"-48" (in 2" increments)

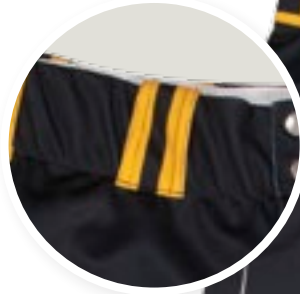
MEN'S INSEAM: 36" is standard, however inseam can be tailored

FABRIC



PRO-WEIGHT POLY

SELECT BELT LOOP TUNNEL COLOR

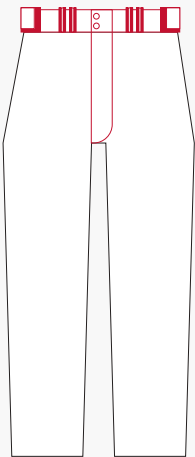


SELECT A PATTERN

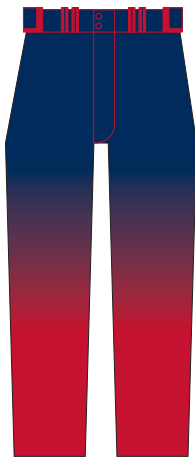


EXAMPLE PATTERNS

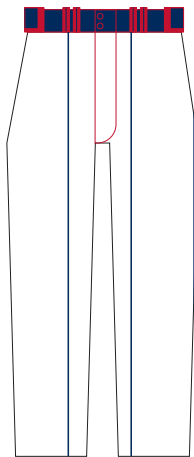
STYLE A



STYLE B



STYLE C



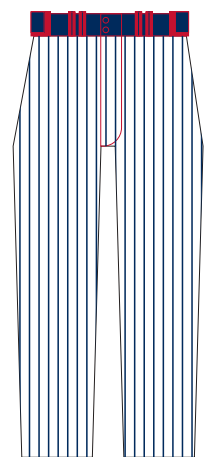
STYLE D



STYLE E



STYLE F



+ SEE MY3N2.COM FOR FULL RANGE OF PATTERNS AND CUSTOMIZATION OPTIONS

FULL-CUSTOM SUBLIMATED SHORTS

Creativity is calling. Take complete control of the design direction of our 3N2 fully sublimated custom shorts. Shorts have drawstring.

MSRP: \$44.99

YOUTH SIZING: YS - XXL

UNISEX SIZING: S - XXXL

MEN'S INSEAM: 9"

WOMEN'S INSEAM: 6"

SELECT A PATTERN



SELECT A FABRIC



EXAMPLE PATTERNS

STYLE FC SHORT 01



STYLE FC SHORT 02



STYLE FC SHORT 03



STYLE FC SHORT 04



STYLE FC SHORT 05



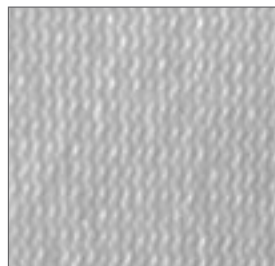
STYLE FC SHORT 06



FABRICS



WE SUGGEST:
GAMEDAY FOR SHORTS



PRO-WEIGHT POLY



POLYZONE™



TRIPLE THREAT

+ SEE MY3N2.COM FOR FULL RANGE OF PATTERNS AND CUSTOMIZATION OPTIONS

FULL-CUSTOM FASTPITCH SUBLIMATED JERSEY

RACERBACK V-NECK

MSRP: \$49.99

SELECT NECK STYLE



Make an impact. Our fastpitch uniform sets are a fashionable way to customize the look of your team. Our jerseys offer several neck and sleeve options.

YOUTH SIZING: S - XL

WOMEN'S SIZING: S - XXL

SELECT PATTERN

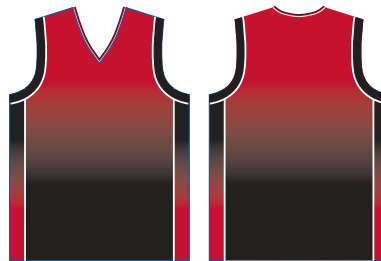


EXAMPLE PATTERNS

STYLE A



STYLE B



STYLE C



STYLE D



STYLE E



STYLE F



V-NECK CAP SLEEVE

MSRP: \$54.99



FAUX FULL-BUTTON

MSRP: \$79.99



FULL-BUTTON

MSRP: \$79.99



TWO-BUTTON HENLEY

MSRP: \$69.99



V-NECK SLEEVELESS

MSRP: \$49.99

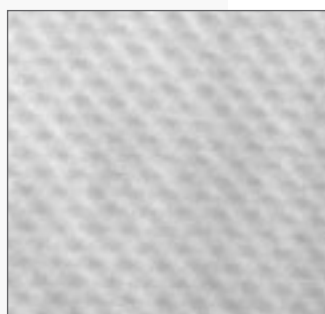


SLEEVELESS FULL-BUTTON

MSRP: \$69.99



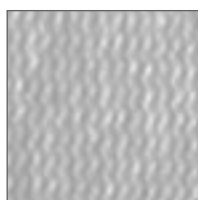
FABRICS



WE SUGGEST:
GAMEDAY



POLYZONE™



PRO-WEIGHT POLY



TRIPLE THREAT

+ SEE MY3N2.COM FOR FULL RANGE OF PATTERNS AND CUSTOMIZATION OPTIONS

FULL-CUSTOM FASTPITCH SUBLIMATED SHORTS

The 3N2 sublimated fastpitch shorts feature a 6" inseam and an elastic waist with drawstring.

MSRP: \$39.99

WOMEN'S SIZING: S - XXL

GIRL'S SIZING: S - XL



SELECT PATTERN



EXAMPLE PATTERNS

STYLE A



STYLE B



STYLE C



STYLE D



STYLE E



STYLE F



FABRICS



WE SUGGEST:
TRIPLE THREAT



GAMEDAY



POLYZONE™

+ SEE MY3N2.COM FOR FULL RANGE OF PATTERNS AND CUSTOMIZATION OPTIONS

SUBLIMATED FLEECE HOODIE

Unlimited design options. Unbeatable comfort. Our oversized sublimated hoodie offers full customization features and the ultra-soft feel of our brushed 9.5-ounce 100% polyester fleece fabric. Features large hoodie with drawstring closure.

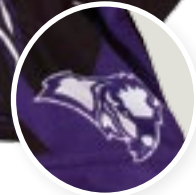
MSRP: Sublimated Hoodie with Sublimated Liner \$79.99

YOUTH SIZING: YS - YXL

WOMEN'S SIZING: S - XXL

MEN'S SIZING: S - XXXL

CHOOSE PATTERN



ADD MASCOT

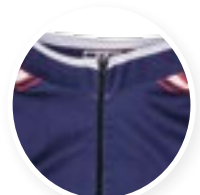
SUBLIMATED SHORT SLEEVE 1/4 ZIP CAGE JACKET

A versatile quarter zip jacket with elastic hem toggle for comfort adjustment. Great for the diamond, workouts or everyday wear.

MSRP: \$69.99

YOUTH SIZING: YS - YXL

MEN'S SIZING: S - XXXL



QUARTER ZIP

+ SEE MY3N2.COM FOR FULL RANGE OF PATTERNS AND CUSTOMIZATION OPTIONS

WOMEN'S FULL CUSTOM SUBLIMATED KNICKERS

Look like you play. Play great in fully customizable knickers featuring rear pocket, half-zip front fly, and front snap enclosures that come in Pro Weight Poly. Full customization means total autonomy over design and material.

MSRP: \$99.99

GIRL'S SIZING: S - XL

WOMEN'S SIZING: S - XXL

KNICKER W/O BELT LOOP

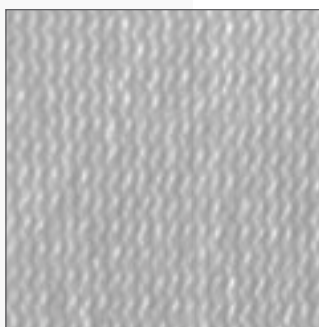


EXAMPLE STYLES

KNICKER W/ BELT LOOP



FABRIC



PRO-WEIGHT POLY

+ SEE MY3N2.COM FOR FULL RANGE OF PATTERNS AND CUSTOMIZATION OPTIONS

SUBLIMATED ARMBANDS

There's no reason why you shouldn't be at the top of your game, every game. Tight fitting yet breathable, our arm sleeves offer uncompromised blood circulation and crucial support for the muscles and tendons that keep you prime. Specialized fabric abates moisture and maintains its comfortable feel, all the while enhancing the professional appearance of your team's uniform with customizable design and logo embellishment.

MSRP: \$24.99



+ SEE MY3N2.COM FOR FULL RANGE OF PATTERNS AND CUSTOMIZATION OPTIONS

CUSTOM GLOVE PROGRAM

MINIMUM QUANTITIES: 10 PER STYLE

PRODUCTION TIME: 4-5 WEEKS

MSRP: \$44.99



- Genuine goatskin leather palm, including digital leather
- Choose from 10 different styles
- 17 stock backhand colors available
- 5 backhand fabrics available
- 8 leather colors available
- 9 wrist strap colors available
- Customize backhand even further with stock patterns (such as digital camo)
- Ability to use your own custom print or custom backhand logo including custom Pantone colors
- Personalize wrist strap with up to 8 characters
- Each glove in a team order can have its own unique personalization

WHERE PERFORMANCE MEETS PERSONALIZATION. SHOW YOUR TEAM SPIRIT BY EXPLORING A NEARLY LIMITLESS RANGE OF DESIGN AND CUSTOMIZATION OPTIONS.

APPAREL SIZE CHARTS

WOMEN'S SIZING

Size	XS	S	M	L	XL	2XL
Bust	31.5-33	33.5-35	35.5-37	37.5-40	40.5-43	43.5-46
Waist	23.5-25	25.5-27	27.5-29	29.5-32	32.5-35	35.5-38
Hip	33.5-35	35.5-37	37.5-39	39.5-42	42.5-45	45.5-48

GIRL'S SIZING

Size	GS	GM	GL	GXL
Bust	25.5-27.5	28-30.5	31-33.5	34-35.5
Waist	20-22	22-23	23-25	25-27
Hip	25-27	27-29	29-32	32-36

MEN'S SIZING

Size	S	M	L	XL	2XL	3XL
Chest	35.5-37	37.5-40	40.5-43	43.5-46	46.5-48	48.5-52
Waist	28-30	30-33	33-36	36-40	40-44	44-46

YOUTH SIZING

Size	YXS	YS	YM	YL	YXL
Chest	—	27-28.5	29-31.5	32-34.5	35-37
Waist	22-23	23-25	24-26	26-30	30-32

SIZING TIPS

Our numeric sized products (such as some custom apparel) are designed to fit the specific measurements. All of our size charts reference body measurements.

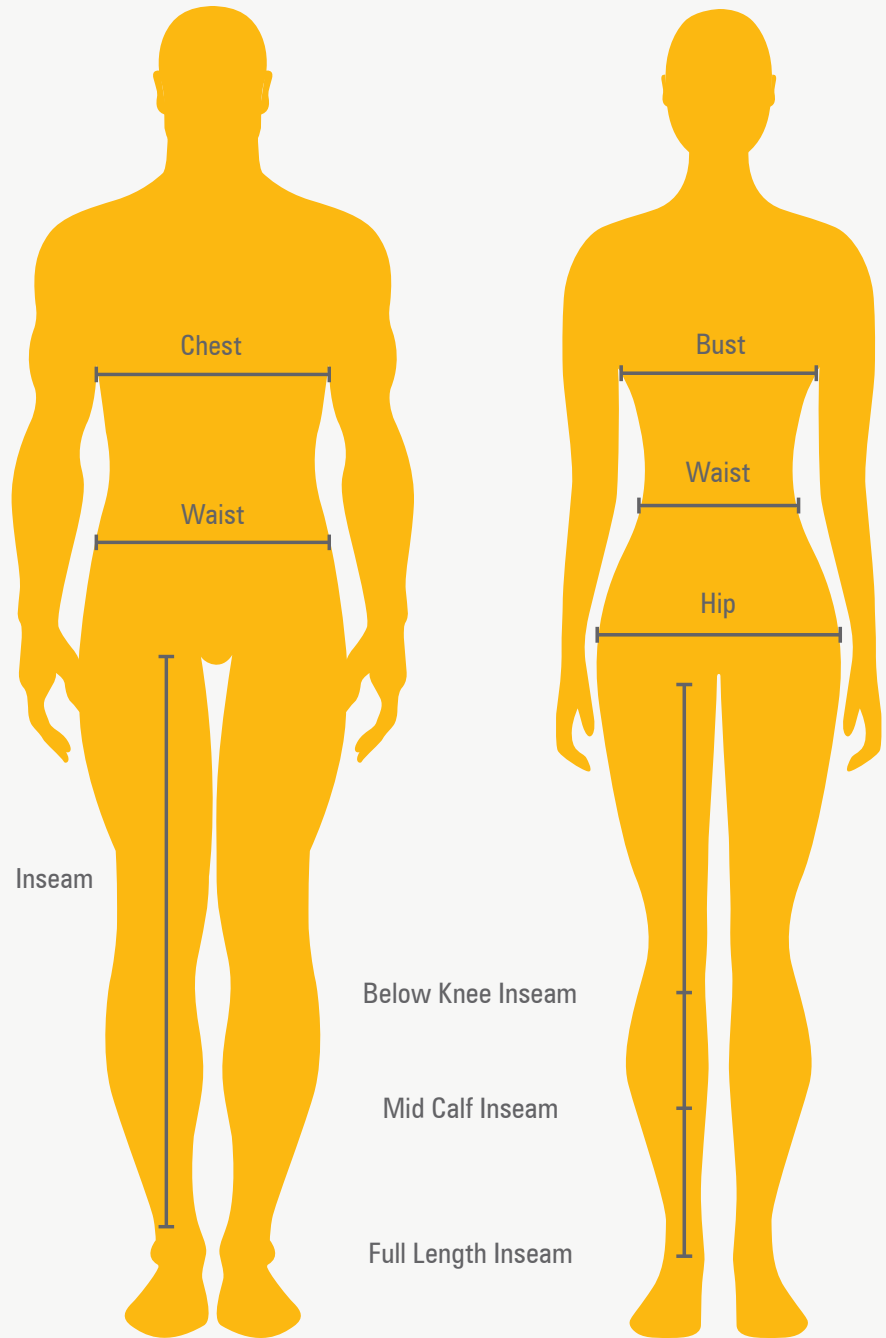
HOW TO TAKE BODY MEASUREMENTS

If a cloth measuring tape is not available, use a string and then measure the length against a yard stick. If possible, have someone else take the measurement.

Chest/Bust – With your arms relaxed at your side, measure the circumference of your chest. Hold the end of the tape at the fullest part of your bust, go under your armpits, around your shoulder blades and back to the front of your chest. Keep the tape level and taut but not stretched.

Waist – Standing straight up and measure your waist at your “natural waistline” which is located above your belly button. Hold the end of the tape at the front of your body and circle around the back to measure the circumference of your waist. No cheating – don’t suck in your stomach.

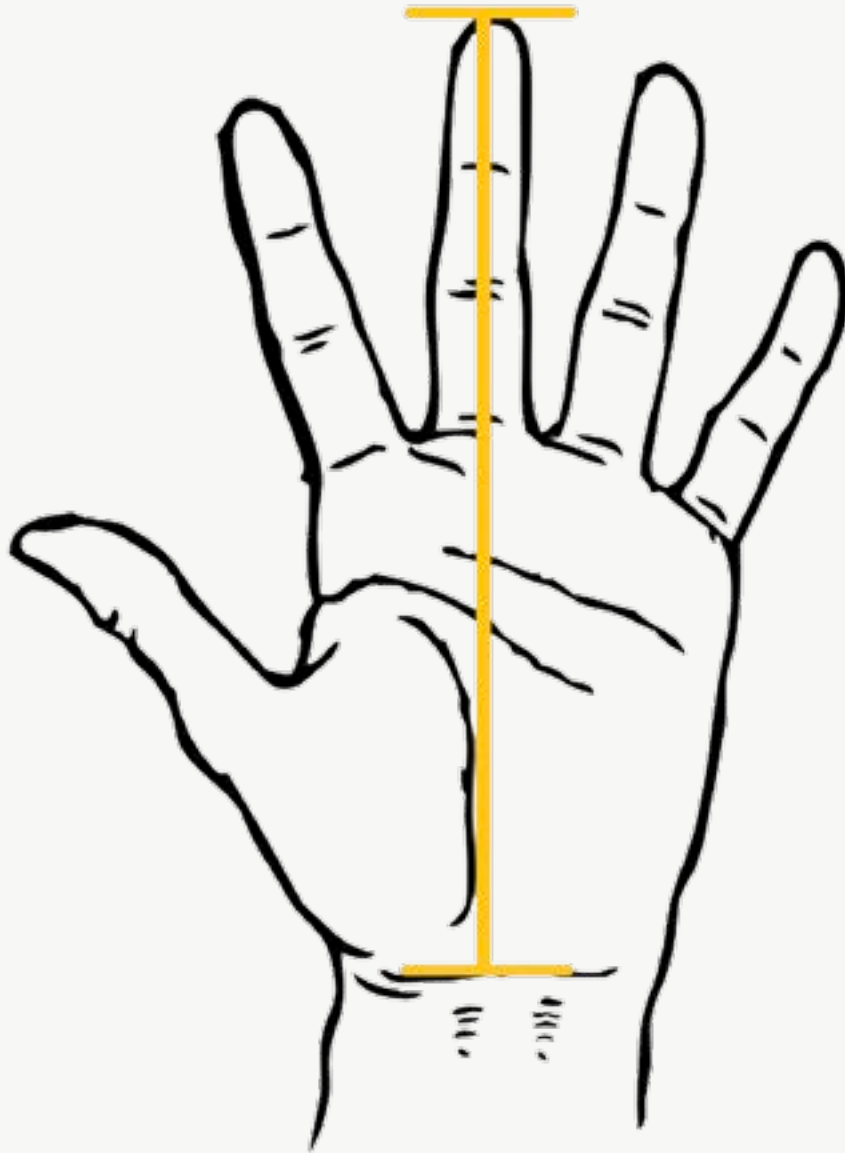
Hip – Start the tape at one hip and circle the tape around the largest part of your backside and over your other hip until you are back where you started. Keep the tape level and taut but not stretched.



GLOVE SIZING CHART

Note: Measure from the crease at the bottom of the palm to the tip of the middle finger.

Sizing charts are intended only to assist you in the selection of a proper size based on specific dimensions. The fit of a glove is not an exact science as each player has their own interpretation of the perfect fit. In order to account for all factors, 3N2 recommends the consideration of hand width, individual finger size and desired "wiggle" room, when selecting a suitable size.



Measurement	Alpha size
YOUTH	
6" - 6 1/4"	Small
6 1/4" - 6 1/2"	Medium
6 1/2" - 6 3/4"	Large
ADULT	
7 1/4" - 7 1/2"	X-Small
7 1/2" - 7 3/4"	Small
7 3/4" - 8"	Medium
8" - 8 1/4"	Large
8 1/4" x 8 1/2"	X-Large
8 1/2" - 8 3/4"	XX-Large
8 3/4" - 9"	XXX- Large
If between sizes, the larger size is recommended	

SUBLIMATION & CUSTOM GLOVE COLORS

3N2 has developed our sublimation color swatches based on the most popular colors used by sports teams around the world. Our art team has done extensive research to ensure that the selected Pantones match up with the most common shades of each color. The use of fades or special effects, such as glowing edges or shadows, will alter the appearance of these colors. In addition, colors may vary slightly when printed on different fabrics.

3N2 can not accept returns for product based on final color output, unless there is proven to be a significant variation between the color selected and that which is printed on the final garment. If you feel that an improper color was used in the printing of your garment, please contact your dealer or sales rep and 3N2 will perform a thorough investigation to determine the nature of the issue.

Furthermore, 3N2 does its very best to match the colors used in sublimation with those used for all other programs and products in our catalog. However, the use of different fabrics and inks for different products makes it impossible to get an exact match between a sublimation product and a footwear or apparel item outside of the sublimation program. 3N2 will not be held responsible for any discrepancies in colors across product lines and returns will not be accepted on those terms. If you have any questions on how the products in your team package will match up, please feel free to request samples from your local dealer or sales rep.

LIGHT PINK 230	PINK 212	PURPLE 2685	DARK PURPLE 2685	YELLOW 109	ATHLETIC GOLD 1235
ORANGE 1585	GIANT ORANGE 172	RED 200	PRO PLAYER RED 1795	CARDINAL 7421	MAROON 7645
VEGAS GOLD 467	OLD GOLD 1245	TEXAS ORANGE 159	BROWN 469	DARK BROWN 476	FSU 202
SAFETY GREEN 281	LIME GREEN 376	KELLY GREEN 348	DARK GREEN 3435	FOREST GREEN 3305	OPTIC YELLOW 396
AQUA 3262	TEAL 3145	SKY BLUE 2905	CAROLINA BLUE 299	COLUMBIA BLUE 279	WHITE
BLACK	DARK NAVY 5395	NAVY 282	DARK ROYAL 281	ROYAL 286	GRAY 2 429
GRAY 4 430	GRAY 5 431	SILVER 7543			

The colors and Pantones shown above reflect the published Pantones closest to our exclusive 3N2 colors. These numbers and swatches should be used as a reference point only, as the 3N2 colors used for printing may vary slightly. Please contact your local dealer or sales rep with any questions prior to signing off on artwork.

PANT EMBELLISHMENT CHART

STOCK PANT BRAID PROGRAM *MSRP: \$15.99*

AVAILABLE WIDTH: 3/16" ONLY

AVAILABLE COLORS FOR STOCK BRAID

WHITE	FOREST GREEN
ORANGE	COLUMBIA BLUE
SCARLET	ROYAL
CARDINAL	DARK NAVY
MAROON	DARK PURPLE
KELLY GREEN	BLACK

APPROXIMATE
BRAID SIZE



PREVIEW SIZE IS NOT TO SCALE



PROGRAM DETAILS:

TURN AROUND TIME: Ships in 2-3 weeks from order approval

MINIMUM ORDER: 12 pairs

Braid can be applied to any 3N2 stock pant

CUSTOM PANT BRAID PROGRAM

Contact 3N2 sales representative for pricing information

WHITE	FOREST GREEN	PINK	TEXAS ORANGE
ORANGE	COLUMBIA BLUE	HOT PINK	TEAL
SCARLET	ROYAL	ATHLETIC GOLD	BROWN
CARDINAL	DARK NAVY	TENNESSEE ORANGE	GREY
MAROON	DARK PURPLE	LIME GREEN	
KELLY GREEN	BLACK	VEGAS GOLD	



PIPING (INCHES)	COLORS AVAILABLE
3/16"	1 Color
3/8" and 1/4"	2 Color
1/2"	1, 2, or 3 Color
1"	1, 2, or 3 Color
1.5"	1, 2, or 3 Color
2"	1, 2, or 3 Color

PROGRAM DETAILS:

TURN AROUND TIME: Ships in 4-5 weeks from order approval

MINIMUM ORDER: 12 pairs

Braid can be applied to any 3N2 stock pant

ADDITIONAL INFORMATION:
Please note: 3N2 Pant Embellishment program is for After Production Braid applied to 3N2 Stock pants.

GENERAL FONTS CHART

STYLE	LETTER	NUMBER
ACCHEN BOLD	A B C D E	0 1 2 3 4
BEANTOWN	A B C D E	0 1 2 3 4
ANGELS	A B C D E	0 1 2 3 4
BOMBER	<i>A B C D E</i>	<i>0 1 2 3 4</i>
BOSOX	A B C D E	0 1 2 3 4
BRUSH SCRIPT	<i>A B C D E</i>	<i>0 1 2 3 4</i>
ATHLETIC	A B C D E	0 1 2 3 4
COBALT	A B C D E	0 1 2 3 4
FRANCHISE BOLD	A B C D E	0 1 2 3 4
CRACKER JACK	<i>A B C D E</i>	<i>0 1 2 3 4</i>
FULL BLOCK	A B C D E	0 1 2 3 4
DODGER SCRIPT	<i>A B C D E</i>	NUMBERS UNAVAILABLE
DUCKFACE	A B C D E	0 1 2 3 4
GALAXY	<i>A B C D E</i>	<i>0 1 2 3 4</i>
FANCY BLOCK	A B C D E	0 1 2 3 4
MICHIGAN	A B C D E	0 1 2 3 4
OLD ENGLISH	A B C D E	0 1 2 3 4
MAVERICK	A B C D E	0 1 2 3 4
QUEST	A B C D E	0 1 2 3 4
STANFORD	A B C D E	0 1 2 3 4
TIMBERWOLVES	A B C D E	0 1 2 3 4
SCRIPT	<i>A B C D E</i>	<i>0 1 2 3 4</i>
SIGNBOARD	A B C D E	0 1 2 3 4

Lettering Configurations:

VERTICALLY ARCHED *Padres* **INCLINING** **STRAIGHT**

Tail Sweeps:



COLOR CHARTS

CUSTOM APPAREL COLOR CHART

100% Polyester Taslan (water resistant) 100% Microfiber Polyester 100% Polyester Taffeta 100% Polyester Mesh Liner 100% Cotton Liner Custom KZONE™ Custom KZONE™ Panel Custom Dugout Polo Custom Dugout Polo 1/4 Zip Neckline - Zipper Color Custom Dugout Polo - Button Colors Custom Roundtrip® Baggy Fit Men's Game Pant

Color	100% Polyester Taslan (water resistant)	100% Microfiber Polyester	100% Polyester Taffeta	100% Polyester Mesh Liner	100% Cotton Liner	Custom KZONE™	Custom KZONE™ Panel	Custom Dugout Polo	Custom Dugout Polo 1/4 Zip Neckline - Zipper Color	Custom Dugout Polo - Button Colors	Custom Roundtrip® Baggy Fit Men's Game Pant
Black	•	•	•	•	•	•	•	•	•	•	•
White	•	•	•	•	•	•	•	•	•	•	•
Grey	•	•	•	•	•	•	•	•	•	•	•
Red	•	•	•	•	•	•	•	•	•	•	•
Navy	•	•	•	•	•	•	•	•	•	•	•
Royal	•	•	•	•	•	•	•	•	•	•	•
Dark Green	•	•	•	•	•	•	•	•	•	•	•
Kelly Green	•	•	•	•	•	•	•	•	•	•	•
Athletic Gold	•	•	•	•	•	•	•	•	•	•	•
Vegas Gold	•	•	•	•	•	•	•	•	•	•	•
Brown	•	•	•	•	•	•	•	•	•	•	•
Purple	•	•	•	•	•	•	•	•	•	•	•
Columbia Blue	•	•	•	•	•	•	•	•	•	•	•
Orange	•	•	•	•	•	•	•	•	•	•	•
Cardinal	•	•	•	•	•	•	•	•	•	•	•
Maroon	•	•	•	•	•	•	•	•	•	•	•
Burnt Orange	•	•	•	•	•	•	•	•	•	•	•

CUSTOM UNIFORM COLOR CHART

	(B) Black (Pantone Black)	(W) White (Pantone White)	(R) Red (200)	(C) Cardinal (202)	(M) Maroon (222)	(P) Purple (267)	(NB) Navy Blue (282)	(RB) Royal Blue (286)	(CB) Columbia Blue (279)	(T) Turquoise (3145)	(KG) Kelly Green (348)	(FG) Forest Green (357)	(G) Gold (1235)	(OG) Old Gold (132)	(VG) Vegas Gold (446)	(SG) Silver Gray (537)	(GR) Gray (Cool Gray 5)	(BR) Brown (476)	(O) Orange (172)	(TX) Texas Orange (167)	(TO) Tenn. Orange
CLUTCH FIT 100% Polyester, 9oz.	●	●	●	●	●	●	●	●	●	●	●	●	●	●	●	●	●	●	●	●	●
CLUTCH PRO POLY 100% Polyester, 12oz.	●	●	●	●	●	●	●	●	●	●	●	●	●	●	●	●	●	●	●	●	●
CLUTCH STEP MESH 100% Polyester, 4oz.	●	●	●	●	●	●	●	●	●	●	●	●	●	●	●	●	●	●	●	●	●
CLUTCH MESH 100% Polyester, 4oz.	●	●	●	●	●	●	●	●	●	●	●	●	●	●	●	●	●	●	●	●	●
CLUTCH STRETCH MESH 100% Polyester, 7oz.	●	●	●	●	●	●	●	●	●	●	●	●	●	●	●	●	●	●	●	●	●
MATERIALS COLOR CHART																					

MY3N2 TERMS AND CONDITIONS

LOGO SET-UP

- Custom Apparel - 3N2 requires a print-ready logo in JPEG or PDF format. 3N2 provides artist services subject to art fee dependent on artwork request.
- Sublimation - 3N2 does not charge set-up fees on our sublimation products for stock logo, font, numbers, or clipart. However, any changes requiring artwork services are subject to a \$50.00 art charge.

CHANGE ORDERS

Once submitted orders are confirmed and approved by 3N2, no changes to my3N2 orders can be accepted. This includes artwork, design, quantities, sizes, names, or personalization.

ARTWORK APPROVALS

- Once your order is submitted, 3N2 will contact you to confirm order approval. Once order has been confirmed, orders cannot be cancelled or modified and are considered final and binding.
- Custom art services are available for sublimation products. Custom artwork is subject to a \$50.00 charge.
- Estimated shipping lead times are not valid until orders are approved and submission confirmed by 3N2.

LOGO RESTRICTIONS - CUSTOM APPAREL

- Logo embellishment is not included in the price on Custom KZONE, Dugout Polo or KZONE Panel custom orders.
- All logos submitted by our customers cannot exceed 12 inches in length by 8 inches in height.
- A \$10.00 per logo surcharge is applicable for all requested custom logos larger than 3 inches by 3 inches. A \$5.00 per logo surcharge is applicable for any additional logos requested that are 3 inches by 3 inches or smaller.
- Oversize Charge: There is a \$5.00 per piece surcharge for sizes XXL and 3XL. There is a \$10.00 per piece surcharge for 4XL and 5XL sizes ordered.
- If customer is providing artwork, 3N2 requires the following VECTORIZED formats: .AI, .EPS, .PDF. Any file received not in these types will be subject to a \$50.00 re-draw fee (this will be assessed per logo and price can vary). If selecting from Stock Art file, no Set-up fee required.

REFILL MINIMUMS

- Custom Apparel: 12 pieces
- Sublimation: 1 piece
- Custom Jerseys: 6 pieces
- Custom Pants: 6 pieces

RUSH ORDER CHARGE

• Custom Uniforms: Subject to 3N2 approval, custom uniform orders can be rushed. Below are the surcharges to guarantee your order ships from the 3N2 factory within:

- 2 weeks: \$100/piece surcharge
- 3 weeks: \$50/piece surcharge
- 4 weeks: \$30/piece surcharge

CUSTOM UNIFORM SHIPPING

No matter where you are located, 3N2 ships express direct from factory to your door for a flat shipping charge of \$1.99 per piece shipped.

3N2, LLC

111 Atlantic Annex Point #1

Maitland, FL 32751

P 407.862.3622 / 877.362.1440

F 800.964.0175

3N2Sports.com

