

# 3N2

# CUSTOM SUBLIMATED



## DESIGN GUIDE

LOGOS & MASCOTS  
JERSEY TEMPLATES  
STYLIZED ARTWORK



# MY3N2.COM

CUSTOMIZE COLORS - MAKE IT YOUR OWN - OUTFIT YOUR TEAM

FOR MORE INFORMATION CONTACT SALES@3N2SPORTS.COM



# 3N2 SUBLIMATION

## TERMS & CONDITIONS

3N2 is proud to introduce our Complete Guide to Sublimation Uniforms and Accessories. We have spent years developing and testing combination of materials, combining the most lightweight/breathable and durable combinations on the market. Unlike other companies that might offer partial sub dye or even full dye, our capabilities create a full head to toe experience. We are a 100% Full Custom Company. We offer templates to help guide you through the decision making process of determining your look for your team. If you are interested and having an artist work with you, just ask. We specialize in giving each team a unique look unlike most other companies. In order to help create a unique look for your team, we have developed a concrete process to maximize your experience, please read them thoroughly. We look forward to working with you and creating your own unique image.

## PRODUCTION TIME

Standard production time for the 3N2 sublimation program is 5-7 weeks from order confirmation, sign-off, and deposit.

## PRINTING MINIMUMS

A Printing minimum of 10 pieces for every new order placed. There are no minimums for add-ons.

## RETURNS & CANCELLATION

No returns or exchanges on sublimation productions. Once approval form is signed off, no changes or adjustments will be accepted.

## ARTWORK & DESIGN

We recommend building uniforms at [my3N2.com](http://my3N2.com). Design services are available. Allow 2-3 business days per request. Submit all art requests to [art@3N2sports.com](mailto:art@3N2sports.com).

## FEES

No extra fee's, unless customer requests custom templates or custom logos.

## FABRICS

Gameday- Light flat back mesh

Polyzone- Moisture wicking poly material

Interlock- Premium material, heavier but durable

# SUBLIMATION MOCKUP PROCESS

WE SUGGEST TO  
USE MY3N2.COM

my **3N2**



OR

**1** PICK YOUR  
TEMPLATE

A circular inset showing a grid of 12 different t-shirt templates, each labeled with a code from C2 to C14. The templates feature various color combinations and designs.

**2** PICK YOUR  
COLORS

A circular inset showing a color palette with 24 color swatches arranged in a 4x6 grid. The colors include various shades of red, purple, green, blue, and brown.

**3** PROVIDE  
TEAM NAME  
AND FONT

A circular inset showing the word 'Bomb' written in a stylized, cursive font with a blue outline and red shadow.

**4** ADD YOUR  
LOGOS

A circular inset showing a t-shirt design with a yellow and black pattern, a logo, and two beer mugs.

**5** PICK YOUR  
NUMBER FONT

A circular inset showing the number '10' in a bold, red font with a white outline.

**6** EMAIL  
REQUEST TO  
SUBLIMATION@3N2SPORTS.COM

A circular inset showing two t-shirt designs. The first is a white t-shirt with 'Warriors' written in a cursive font, and the second is a white t-shirt with the number '10'.

# INDEX

**302**

## MEN'S

Crew Neck	P. 1-3
2 Button	P. 3
Full Button	P. 4

## WOMEN'S

V-neck Cap Sleeve	P. 4
Sleeveless	P. 5
Full Button	P. 5
Racerback	P. 5
Knickers	P. 5

## SEMI CUSTOM PANTS

P. 6

## EXAMPLES

P. 7-12

Uniforms	P. 7-10
Arm Sleeves	P. 11
Hoodies	P. 11
Socks	P. 11
Blankets	P. 12

## CLIP ART

P. 13-18

## FONTS

P. 19

## POLICY PAGE

P. 20

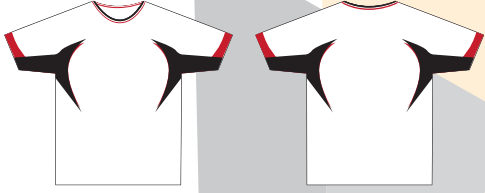
# MEN'S CREWNECK



# MEN'S CREWNECK



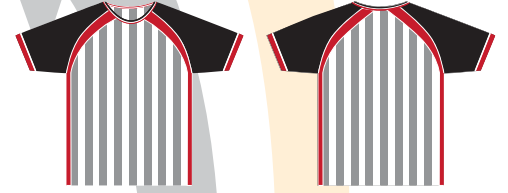
C25



C26



C27



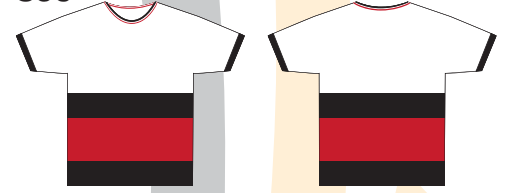
C28



C29



C30



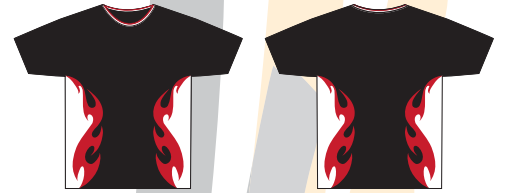
C31



C32



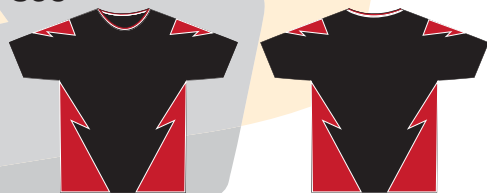
C33



C34



C35



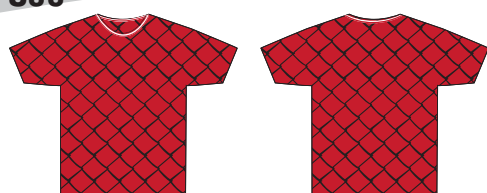
C36



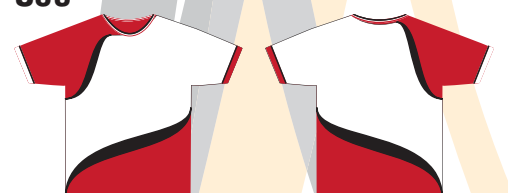
C37



C38



C39



C40



C41



C42



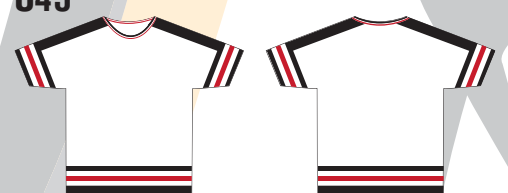
C43



C44



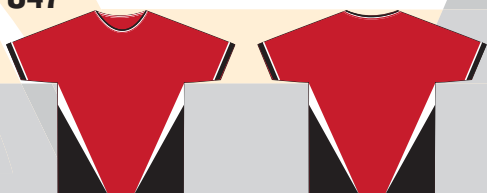
C45



C46



C47



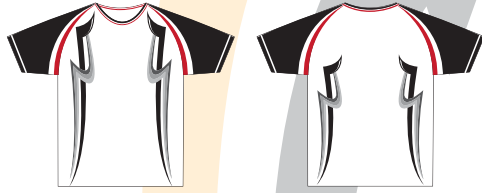
C48



# MEN'S CREWNECK



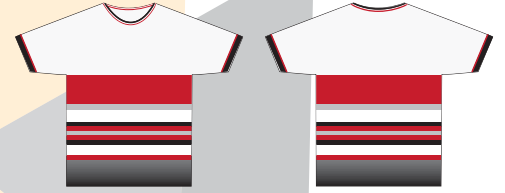
C49



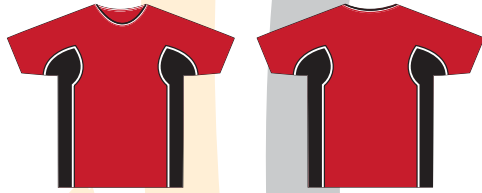
C50



C51



C52



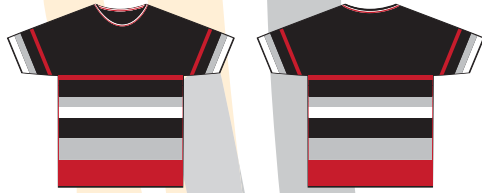
C53



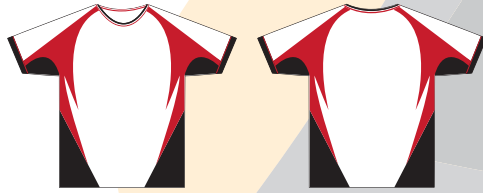
C54



C55



C56

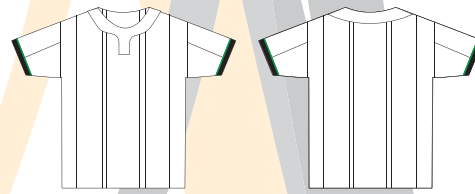


C57



# MEN'S 2 BUTTON

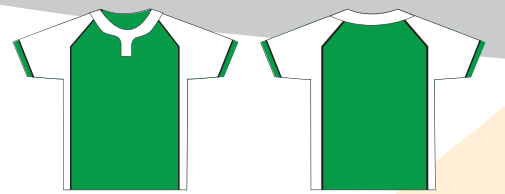
2B1



2B2



2B3



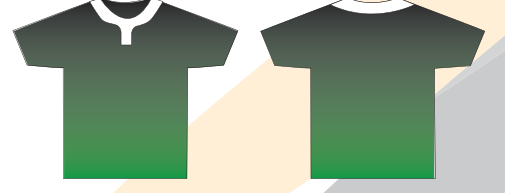
2B4



2B5



2B6



2B7



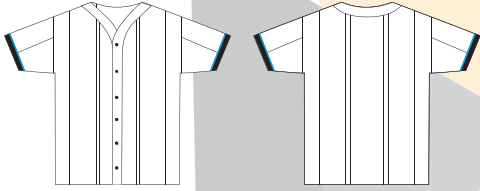
2B8



# MEN'S FULL BUTTON



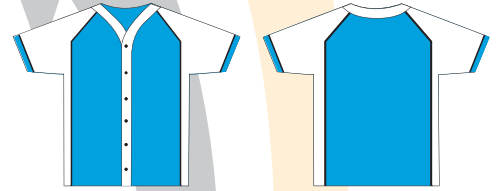
FB1



FB2



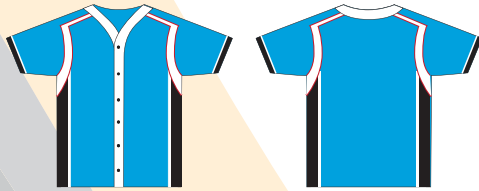
FB3



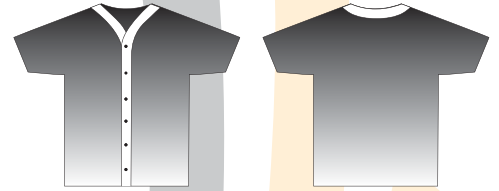
FB4



FB5



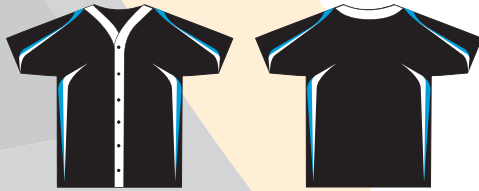
FB6



FB7



FB8



# WOMEN'S V-NECK CAP SLEEVE

CS1



CS2



CS3



CS4



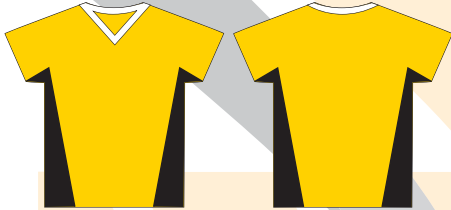
CS5



CS6



CS7

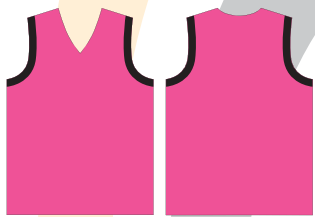




# WOMEN'S SLEEVELESS



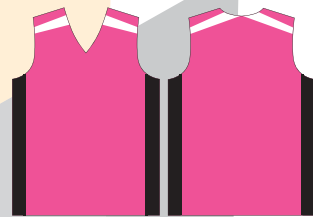
S1



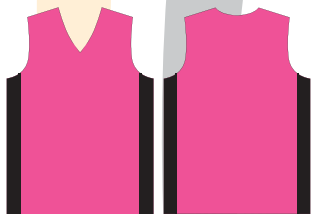
S2



S3



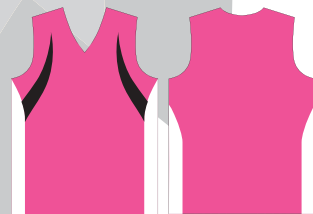
S4



S5

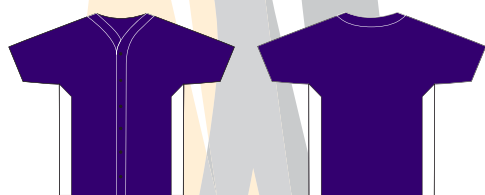


S6



# WOMEN'S FULL BUTTON

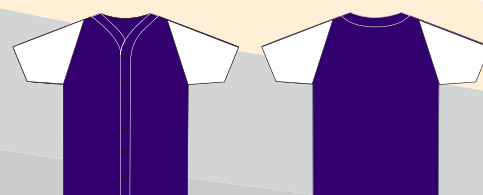
WFB1



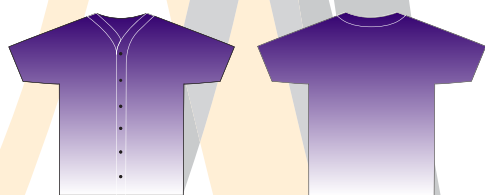
WFB2



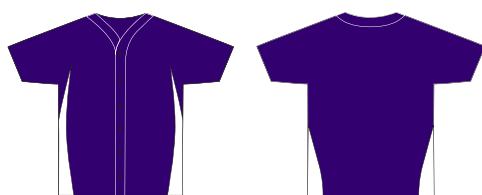
WFB3



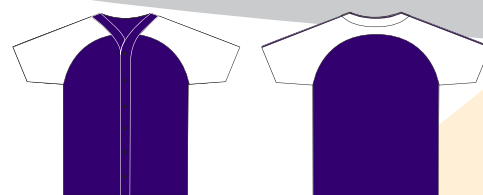
WFB4



WFB5

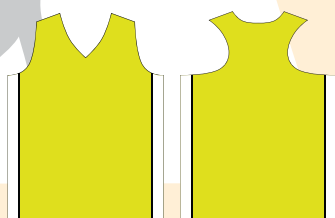


WFB5

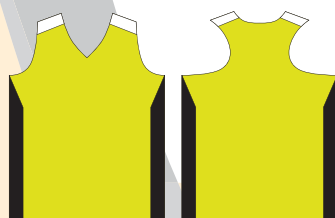


# WOMEN'S RACERBACK

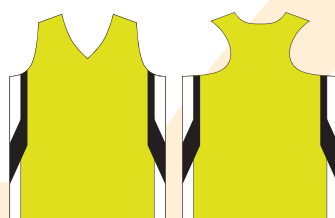
WRB1



WRB2



WRB3



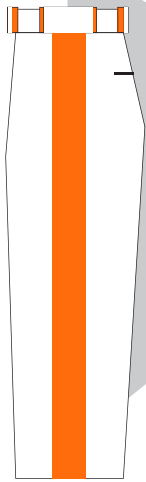
WRB4



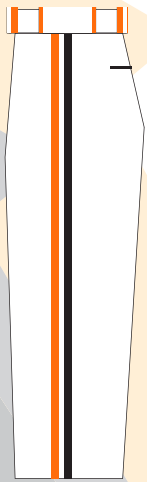
# SEMI-CUSTOM PANTS



SP1



SP2



SP3



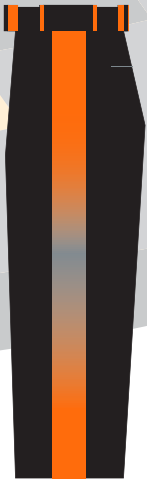
SP4



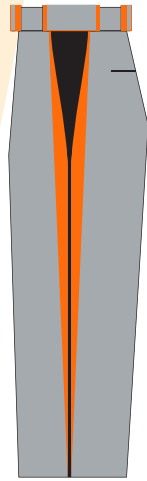
SP5



SP6



SP7

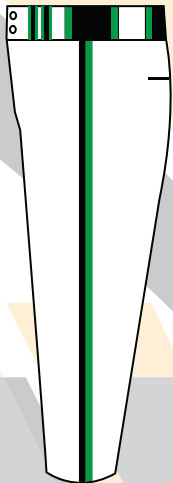


SP8

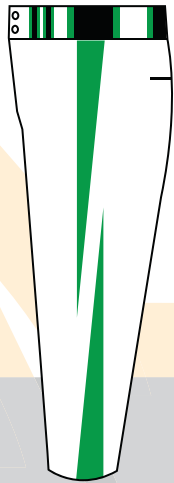


## WOMENS FULL-CUSTOM KNICKERS

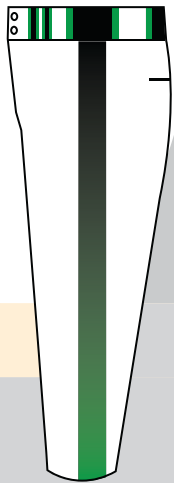
WK1



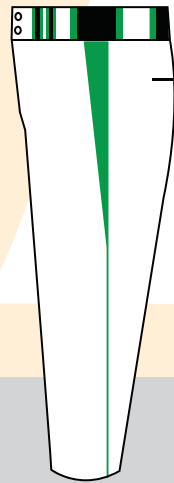
WK2



WK3



WK4



# MEN'S CREWNECK EXAMPLES



E1



E2



E3



E4



E5



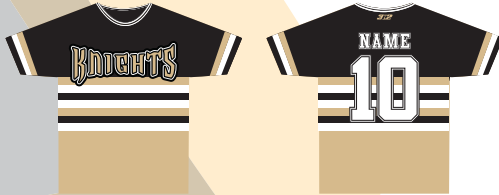
E6



E7



E8



E9



E10



E11



E12



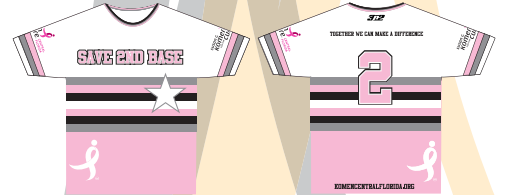
E13



E14



E15



E16



E17



E18



E19



E20



E21



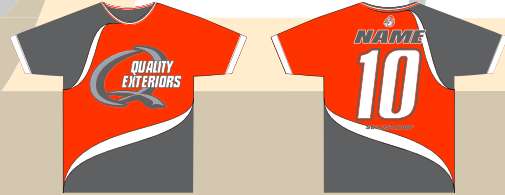
E22



E23



E24



# MEN'S FULL BUTTON EXAMPLES



EF1



EF2



EF3



EF4



EF5



EF6



EF7



EF8



EF9



EF10



EF11



EF12



# MEN'S 2-BUTTON EXAMPLES

EB1



EB2



EB3



EB4



EB5



EB6



EB7



EB8



EB9



# WOMEN'S EXAMPLES



EW1



EW2



EW3



EW4



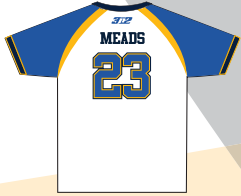
EW5



EW6



EW7



EW8



EW9



EW10



EW11



EW12



EW13



EW14



EW15



EW16



EW17



EW18



EW19



EW20



EW21



# PANT EXAMPLES



EP1



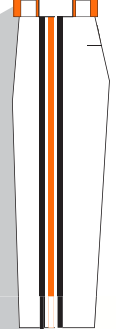
SEMI-CUSTOM

EP2

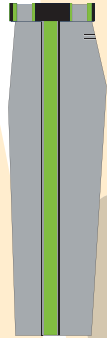


SEMI-CUSTOM

EP3

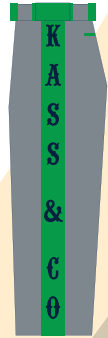


EP4



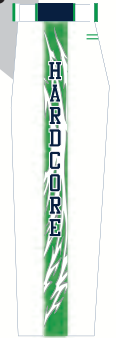
SEMI-CUSTOM

EP5



SEMI-CUSTOM

EP6

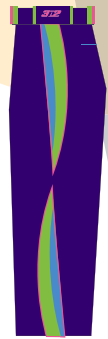


EP7



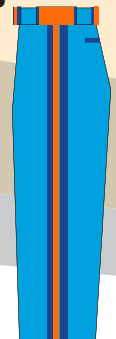
FULL-CUSTOM

EP8

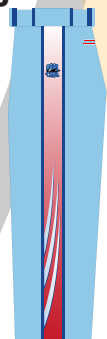


FULL-CUSTOM

EP9



EP10



FULL-CUSTOM

EP11

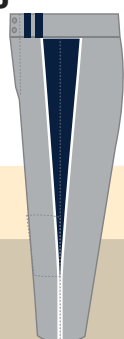


FULL-CUSTOM

EP12

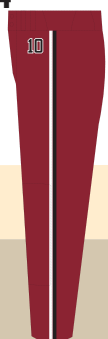


EP13



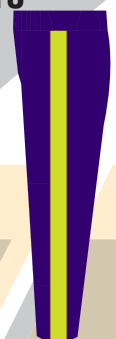
WOMENS KNICKERS

EP14



WOMENS KNICKERS

EP15



# HOODIE EXAMPLES



EH1



EH2



EH3



EH4



# ARM SLEEVE EXAMPLES

EA1



EA2



EA3

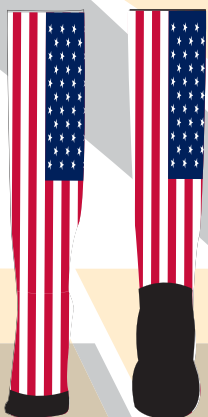


EA4



# SOCK EXAMPLES

ES1



ES2



ES3

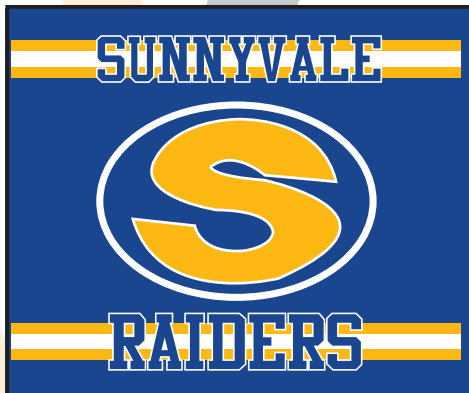


ES4





EB1



EB2



EB3



EB4



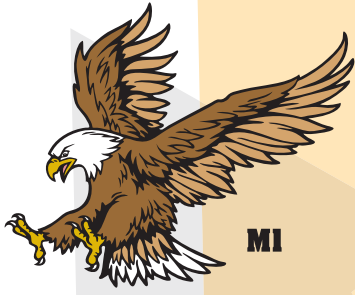
EB5



EB6







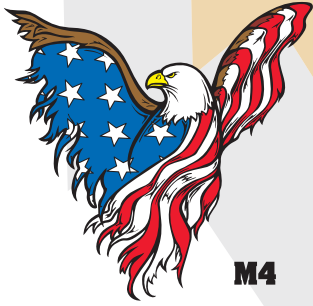
M1



M2



M3



M4



M5



M6



M7



M8



M9



M10



M11



M12



M13



M14



M15



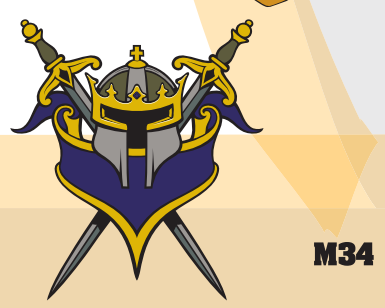
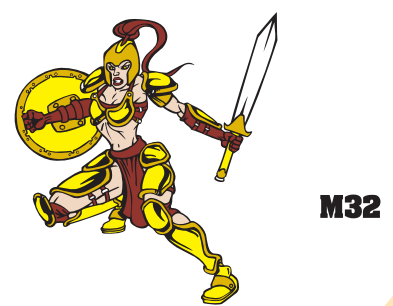
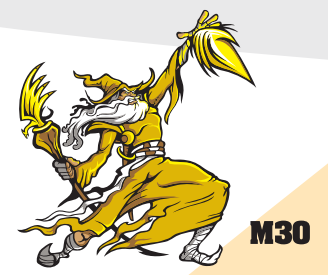
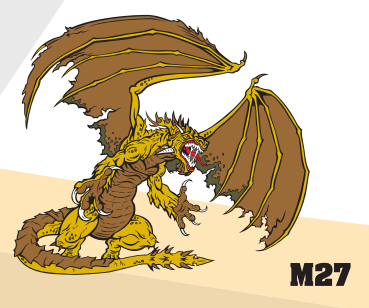
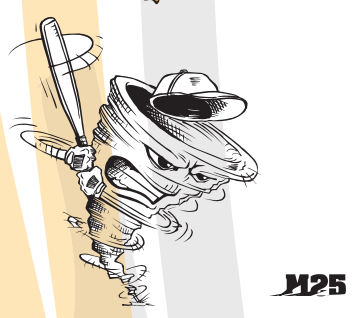
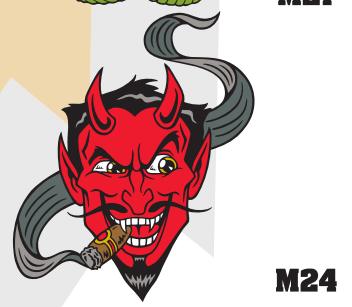
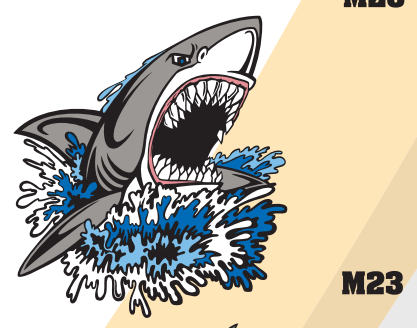
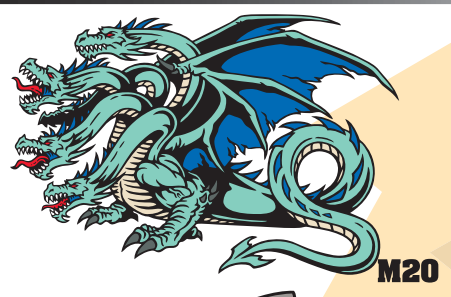
M16



M17



M18





M37



M38



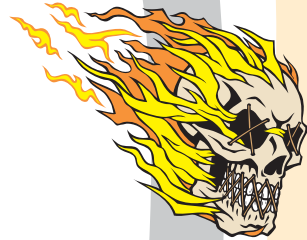
M39



M40



M41



M42



M43



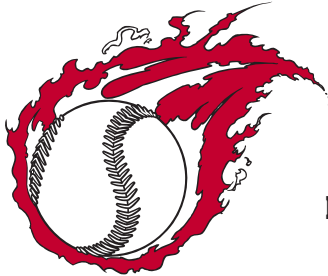
M44



M45



M46



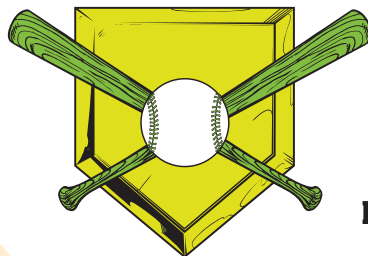
M47



M48



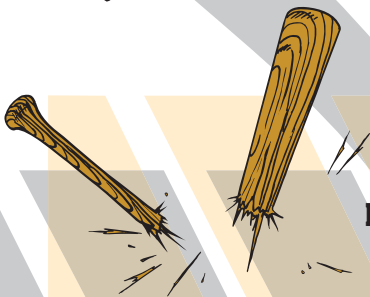
M49



M50



M51



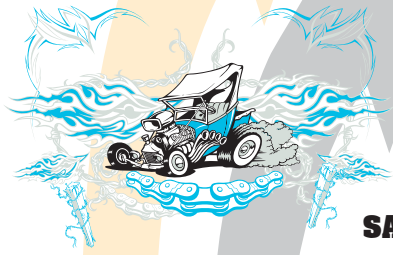
M52



M53



M54



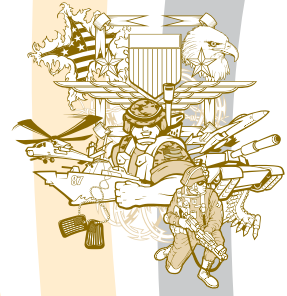
SA1



SA2



SA3



SA4



SA5



SA6



SA7



SA8



SA9



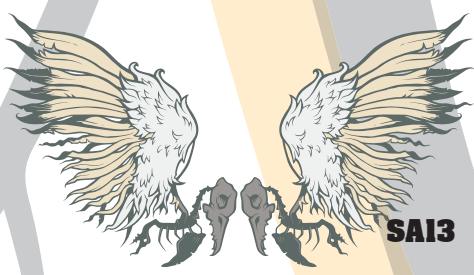
SA10



SA11



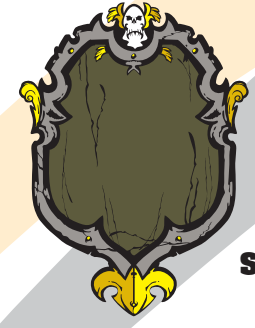
SA12



SA13



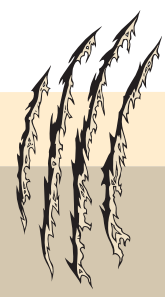
SA14



SA15

# 冠軍

"CHAMPION" SA16



SA17



SA18



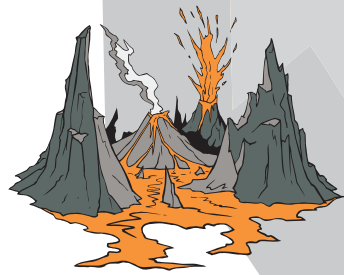
**SA19**



**SA20**



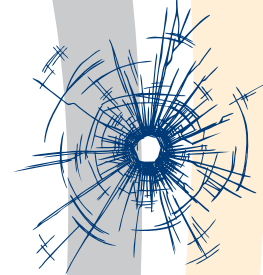
**SA21**



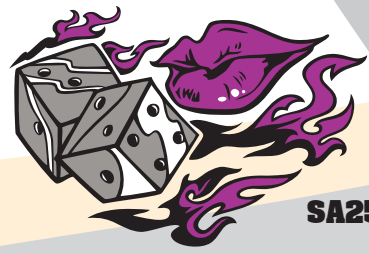
**SA22**



**SA23**



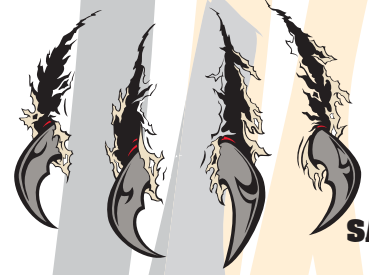
**SA24**



**SA25**



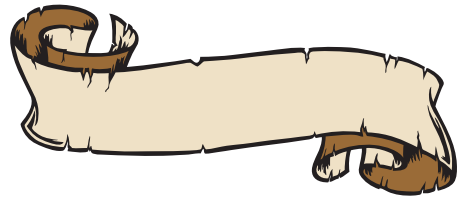
**SA26**



**SA27**



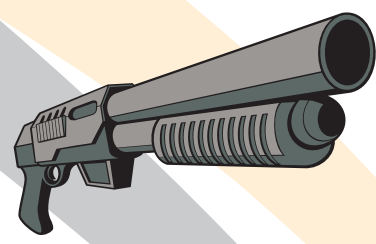
**SA28**



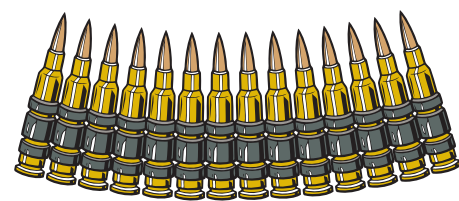
**SA29**



**SA30**



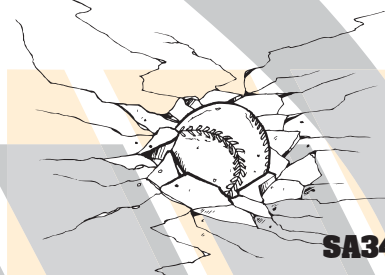
**SA31**



**SA32**



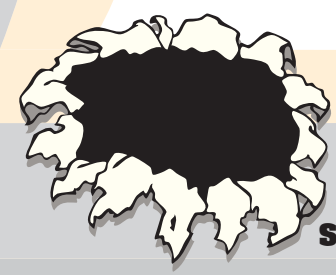
**SA33**



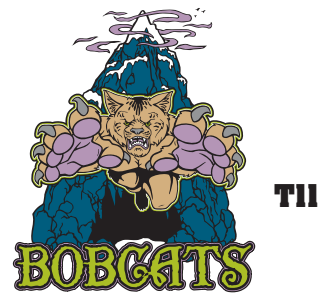
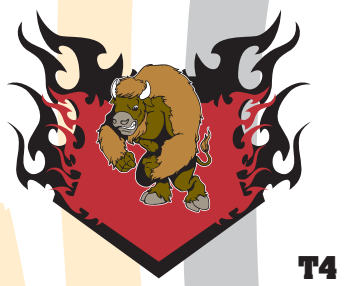
**SA34**



**SA35**



**SA36**





**ACHEN**

**BEANTOWN**

**ANGELS**

*BOMBER*

**BOSOX**

*BRUSHSCRIPT*

**ATHLETIC**

*COBALT*

**FANCYBLOCK**

*CRACKERJACK*

**FULLBLOCK**

*DODGER*

**DUCKFACE**

*GALAXY*

*MICHIGAN*

*OLDENGLISH*

**NCAA**

*MAVERICK*

**QUEST**

**STANFORD**

**TIMBERWOLVES**

*SCRIPT*

**SIGNBOARD**

**A CUT ABOVE**

**ABDUCTION**

**ACQUAINTANCE**

**ADDSPEEDY**

**ADONAIS**

**FIFTERS**

**ALRIGHTB**

**BARROBOT**

**BARROW**

**BLOBS**

**BREEZESTAR**

**CHAINSAWZ**

**CHAR**

**CREAKFRA**

**DESTROY**

**DIRTYEGO**

**DONPICO**

**DROMON**

**FACETS**

**FESTIVAL**

**GLOOGUN**

**HELENA**

**HPUNK**

**IRONMAN**

**jamtostr**

**JFROGOUT**

**knuckled**

**MISERABLE**

**MOSCOSO**

**NUKUNUKU**

**PHILADELPHIA**

**PROCYON**

**RIVANNA**

**SAMDAN**

**SERFIN**

**SNOWD**

**STARTLIN**

**stcho**

**SURVIANT**

**TAKEOUT**

**TEAR**

**TOXICWASTE**

**TUSSLE**

**UNCEY**

**XIPHOS**

**YIKES**



www.3N2sports.com  
1.877.362.1440  
sales@3n2sports.com

# 2013 SUBLIMATION COLOR POLICY



CLUTCH  
APPAREL

3N2 has developed our sublimation color swatches based on the most popular colors used by sports teams around the world. Our art team has done extensive research to ensure that the selected pantones match up with the most common shades of each color. The use of fades or special effects, such as glowing edges or shadows, will alter the appearance of these colors. In addition, colors may vary slightly when printed on different fabrics. 3N2 can not accept returns for product based on final color output, unless there is proven to be a significant variation between the color selected and that which is printed on the final garment. If you feel that an improper color was used in the printing of your garment, please contact your dealer or sales rep and 3N2 will perform a thorough investigation to determine the nature of the issue.

Furthermore, 3N2 does its very best to match the colors used in sublimation with those used for all other programs and products in our catalog. However, the use of different fabrics and inks for different products makes it impossible to get an exact match between a sublimation product and a footwear or apparel item outside of the sublimation program. 3N2 will not be held responsible for any discrepancies in colors across product lines and returns will not be accepted on those terms. If you have any questions on how the products in your team package will match up, please feel free to request samples from your local dealer or sales rep.

Sincerely,

Your 3N2 Sublimation Team

## 3N2 SUBLIMATION COLOR PALETTE



\* The colors and pantones shown above reflect the published pantones closest to our exclusive 3N2 colors. These numbers and swatches should be used as a reference point only, as the 3N2 colors used for printing may vary slightly. Please contact your local dealer or sales rep with any questions prior to signing off on artwork.